

## 12. COMMUNITY FACILITIES

---

The City of Havre de Grace prides itself on having generous community facilities that are available and accessible. These facilities can be grouped into five general categories: (1) Parks, Recreation, and Open Space, (2) Museums and Cultural Facilities, (3) Schools, (4) Public Buildings, and (5) Health Services. For the purpose of this comprehensive plan, community facilities include properties and buildings providing a service to the City, many of which are owned and operated by Harford County Government, like public schools, library, and the large nearby regional parks. Community facilities are integral parts of the physical structure of a community and they greatly influence the community's appearance, livability, and their availability and adequacy are a measure of the quality and desirability of a community.

This chapter is divided into sections based on the above-mentioned five categories. Each section includes a brief introduction of the topic and description of existing facilities for each category within the City. Related community facilities that are located outside of the City but serve the region are also addressed in each section. These are community facilities that benefit Havre de Grace residents by virtue of their proximity to the City, such as the Havre de Grace Ambulance Corps or Susquehanna State Park, Swan Harbor Farm, and other recently purchased lands on the Oakington Peninsula which provide major passive recreational opportunities along the Susquehanna River and Chesapeake Bay. This chapter will discuss the relationships between local and county government for providing services by way of the various community facilities and will identify overarching requirements, like Adequate Public Facilities regulations for school capacity, that govern these provisions.

In this chapter, you will see the generous array of community facilities available to residents and visitors within the Havre de Grace region. Intrinsic to these facilities are the volunteers that support them, whether it be Fire and EMS, the membership of the local Recreation Council, volunteer staffing of the City's Visitor Center, emcees and ushers at the Opera House, or the numerous board members and docents for the museums who provide caretaking for City-owned property. These facilities are sustained though are non-profits that are dependent of the generosity of volunteers giving of their personal time and support to make these endeavors possible.

### **Community Facilities described in this chapter include the following:**

- 1. Parks, Recreation, and Open Space*
- 2. Museums, Arts, and Cultural Facilities*
- 3. Schools*
- 4. Public Buildings*
- 5. Health Facilities*

### **Parks, Recreation, and Open Space**

---

Parks, recreation, and open space are very important components for a community in terms of people's physical health, mental well-being, and quality of life. Planning for parks, recreation, and open space are three distinct but related considerations in the Comprehensive Planning process. All involve the setting aside of land, whether it be for the protection of environmental or landscape resources, the active recreational use of ball fields and play areas, or the more passive enjoyment of natural areas through

hiking. The issue of parks, recreation, and open space presents a challenge to community leadership because of the costs associated with land acquisition, the long-term planning and provision for changing recreational needs, and the intrinsic necessity but elusive value of preserving public open space.

The Harford County Land Preservation, Parks & Recreation Plan (LPPRP) governs the planning of parks, recreation, and open space for all of Harford County including the municipalities. Updated every five years, the most recent plan was adopted in 2023 and describes the framework for recreation planning within the county. Harford County is divided into 15 geographic regions with Recreation Councils representing local needs and providing recreation programs for all ages, ranging from youth sports programs to adult and senior offerings. The Havre de Grace Recreation Council encompasses the greater Havre de Grace area and is one of the fastest growing recreation council areas according to the LPPRP<sup>1</sup>. Additional recreational programs are offered through Havre de Grace Little League, which is a federally chartered non-profit organization under Little League International, providing tee-ball, baseball, and softball to area youth. The Havre de Grace Boy's & Girl's Club also offer recreational activities to youth in after-school programs.

---

*HARFORD COUNTY LPPRP*  
*Please see this link for the full document;*  
<https://dnr.maryland.gov/land/Documents/Stewardship/Harford-2022-LPPRP-Draft.pdf>

---

Harford County utilizes Maryland Department of Natural Resources LPPRP guidelines, which recommends a local recreation acreage of 30 acres per 1,000 residents within a ½ mile radius for walkability and 5-mile radius as a 15-minute drive standard for accessibility of regional park facilities. These state guidelines govern recreation planning within the entire county from which a capital improvement plan is created. The LPPRP is based on geographies, proximity, and equity standards that guide the development of new facilities. Please see the Harford County LPPRP for data and maps for a full view of parks, school playfields, and other information in relation to proximity and equity as required by state guidelines.

A real focus of this Comprehensive Plan is to create healthy places for a healthy lifestyle. This is desired for residents of all ages with a goal of connecting people to places that promote active and healthy lifestyles. Havre de Grace has extensive opportunities available for both youths, seniors, and those in between to avail themselves to the region's parks, activity centers, and trail networks. This chapter provides an illustrative map of the comfortable walking distance of ¼ mile to local and neighborhood parks, really showcasing the walkable nature of the City with respect to its public parks particularly in the older sections of the City. In addition, there is also a map showing the multiple, often overlapping, trail systems within Havre de Grace. Private neighborhood parks and trail networks owned by homeowners associations are not shown on this illustration as they are not open for public use.

Green Infrastructure is an important aspect of City parks and open space, now more than ever in relation to climate change. The City has a responsibility to integrate green practices into design and maintenance of facilities and recreational spaces. This is exemplified by the aggressive implementation of living shorelines and regenerative stormwater conveyance practices in the City's public spaces, where these features not only provide measurable water quality improvements and habitat but greatly improve the aesthetic of the City's parklands. This method of responsive infrastructure is intended to better serve the citizens and community while being equitable, inclusive, and environmentally restorative.

---

<sup>1</sup> See Harford County Land Preservation, Parks & Recreation Plan p. 21 Table 1-3 and related caption.





Havre de Grace has a wealth of public parks and recreational facilities, both local and regional. Four different kinds of parks are described in this plan and are determined by their scale and use. These include:

- **Local parks**, which provide localized limited outdoor active and passive recreational enjoyment and are often smaller in scale and available within walking distance of adjacent neighbors in a densely populated community
- **Neighborhood parks**, which are larger and provide active and passive recreational opportunities for all including sports playing fields and active play space
- **Playfields**, which are often school/recreational complexes that provide a greater number of playing fields for more competitive organized sports events
- **Regional parks**, which are large multipurpose with organized and unorganized recreational opportunities within the parks that serve an entire City or a larger region and often have interesting topography and physical attributes such as lakes and/or rivers.

This section will also describe the City's generous indoor recreational facilities and growing trail network that are great assets for connecting residents to the City's varied types of open space within the region.

The following is a list of park and recreational facilities within or in close proximity to the City and is organized under broad headings of Havre de Grace recreational facilities, privately-held parks and marinas, indoor recreational facilities, Harford County Board of Education playfields, regional parks and open space, and trails that connect. You will see that many of these are waterfront parks that are connected by trail systems as the City continues to create a network of beautiful public spaces along the shoreline.

#### [Havre de Grace Recreational Facilities](#)

**Tydings Park** is located south of Commerce Street along the Chesapeake Bay waterfront and consists of 8.9 acres of park area and includes the **Municipal Yacht Basin**. The park includes facilities such as a refreshment stand, fishing area, picnic facilities, a 240-slip public marina with fuel and pump out facilities, a public boat ramp, parking facilities, and playground with a large expanse of equipment for all ages and abilities. Tydings Park is the premier public park within Havre de Grace and hosts events each year, such as the summer-time *Concerts in the Park*. Tydings Island is located just south of the park and was created utilizing dredged material, providing shelter to the marina and offshore habitat.

**North Park** is a large public park area located in the northern portion of the City along the Susquehanna River. It is comprised of approximately 47 acres, including the Lock House and **McLhinney Park**, a 2 acre playground area. Of this, approximately 9 acres are owned by the City and the remaining acres are leased by the City from the Constellation Corporation (formerly Exelon). North Park's facilities include the Lock House Museum, the canal lock and swing bridge, and a transient dock for kayak launch and fishing. North of the playground is the North Park Loop Trail which is a hiking trail that traverses a large natural area that ends south of the CSX Susquehanna River Bridge. Coincidental trails through North Park include the Mason-Dixon Trail and the Lower Susquehanna Heritage Greenway.

**David R. Craig Park** is a small waterfront park (approximately 1.5 acres) at the northern end of Union Avenue. Located across from Legion Square at the primary entrance of the City's Main Street District, the park offers a recently installed monument to honor Alfred B. Hilton, Medal of Honor recipient, excellent water-views,

and parking for the downtown. In 2022, the City completed a regenerative stormwater conveyance system water quality feature with pathways and native plantings throughout the shoreline here.

**Frank J. Hutchins Memorial Park** is a small waterfront park (approximately 2 acres), located at the foot of Congress Avenue at the Susquehanna River within close proximity to the downtown. It consists of a fishing pier that also serves as a transient dock for boats and visiting vessels requiring deep water dockage, like the Pride of Baltimore II.

**Jean S. Roberts Park** is a small waterfront park (less than one acre) located at the foot of Otsego Street at the Susquehanna River which has been transformed into a regenerative stormwater conveyance system with natural pathways throughout.

**Bradford Green Park** is a small park (under an acre in size) owned by the City along Village Drive in the Bradford Green neighborhood and includes a basketball court, small playground, and an open play area.

**Todd Field** is a larger neighborhood park that is approximately 5.3 acres and located on both sides of Seneca Avenue in the Concord Fields community. Its facilities include a basketball court and a playground and hosts a community garden, food forest, and beehives through the Green Team.

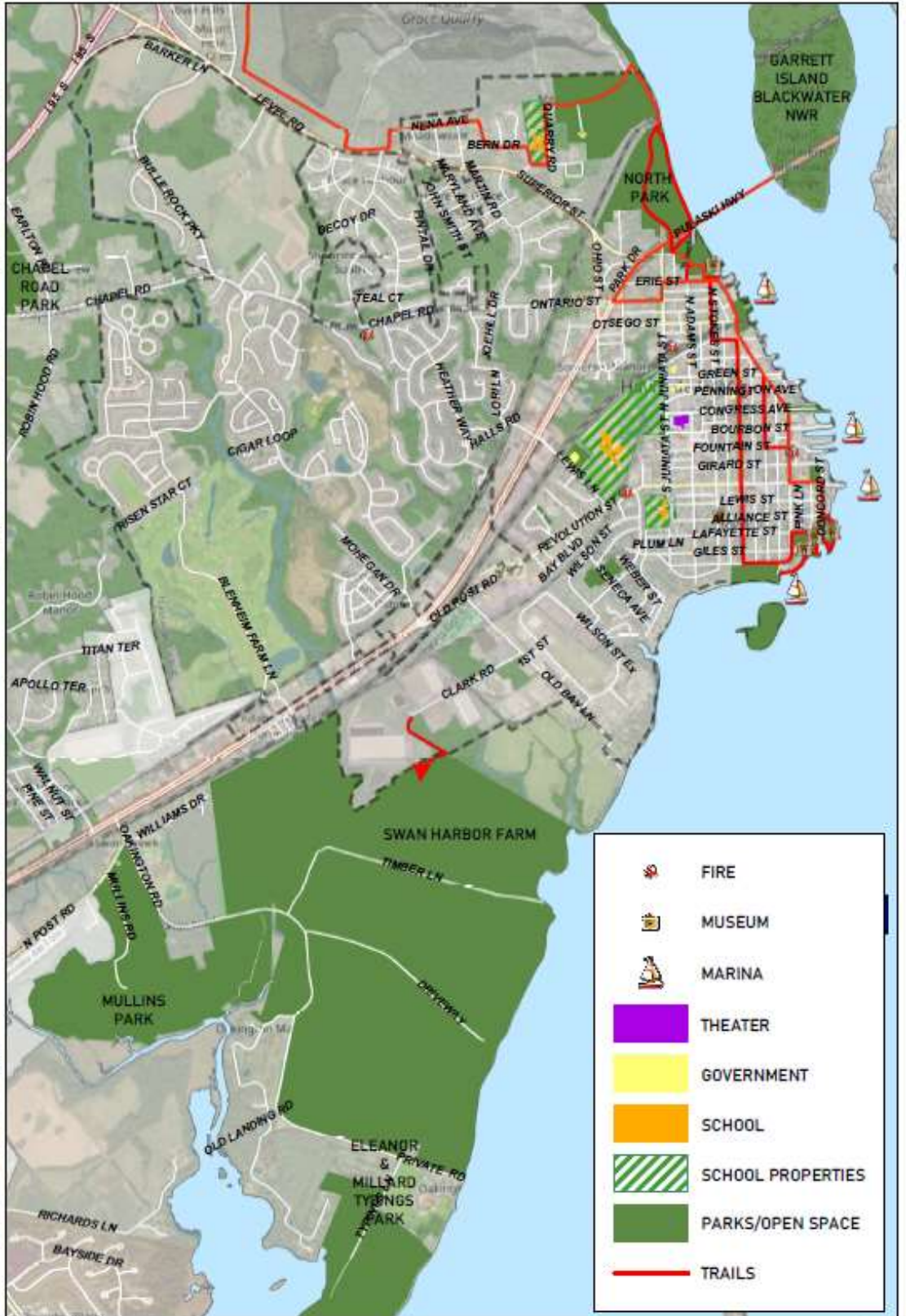
**Concord Point Park** is approximately 9 acres in area and is located from Concord Point to Market Street, primarily along the south side of Lafayette Street. Facilities in this park include the Concord Point Lighthouse, the Havre de Grace Decoy Museum, the Havre de Grace Maritime Museum, a portion of the Promenade, an observation deck, a transient dock at the Lighthouse, an open play area at Lafayette and Market Streets, and the O'Neill House.

**Veterans Park** is a 1.6 acre site located behind Citizens Care Center on Concord Street with paved walking trails and a full complement of adult exercise equipment for health and well-being.

As the City's first dog park, **K9 Cody Park** is located within the Havre de Grace Community Center complex and features separate fenced areas for small and large dogs

**Water Street Heritage Park** is a recently created park featuring two new boat ramps for recreational boat access and living shoreline features. Formerly an industrial site, the property was purchased in partnership with Harford County Government and has been developed in partnership with Department of Natural Resources specifically for recreational boating. Industrial bulkheads have been replaced with sand and stone to replicate a more natural shoreline for environmental restoration, tying in with water quality improvements in adjacent Jean S. Roberts Park to the south.

PUBLIC PARKS in Havre de Grace			
Source: City of Havre de Grace - Department of Planning (2023)			
NAME	LOCATION	ACRES	DESIGNATION
Tydings Park & Yacht Basin	352 COMMERCE STREET	8.9	Local
Tydings Island	SOUTH OF TYDINGS PARK	13.1	Local
North Park	CONESTEO STREET	47	Local
David R. Craig Park	NORTH UNION AVE	1.5	Local
Frank Hutchins Park	100 CONGRESS AVENUE	2	Local
Jean S. Roberts Park	OSTEGO/WATER STREETS	0.8	Local
Bradford Green Park	VILLAGE DRIVE	0.2	Local
Todd Field/Seneca Park	BLOOMSBURY/SENECA	5.3	Neighborhood
Concord Point Park	701 CONCORD STREET	9	Local
McLhinney Park	N. ADAMS STREET/ LOCUST LANE	2	Local
Veterans Park	CONCORD/REVOLUTION STREET	1.6	Local
K9 Cody Park	100 LAGARET LANE	1	Local
Water Street Heritage Park	WATER STREET	3.1	Local



	FIRE
	MUSEUM
	MARINA
	THEATER
	GOVERNMENT
	SCHOOL
	SCHOOL PROPERTIES
	PARKS/OPEN SPACE
	TRAILS



### Privately-held Parks and Marinas

**Stancill Park** is a privately-owned baseball/softball facility of approximately 14 acres which is located at the intersection of Old Bay Lane and Old Post Road adjacent to the Chesapeake Industrial Park. The facilities are owned by the Havre de Grace Little League Inc. and include four baseball fields, a softball field, a tee-ball field, a refreshment stand with restrooms, and League offices and storage.

**Private Marinas** operate within the Havre de Grace City limits, to include the Havre de Grace Marina and Yacht Sales (with 45 boat slips) on Water Street and affiliated Log Pond Marina (68 slips) on Concord Street; Tidewater Marina located on Market Street (175 slips); and Penns Beach Marina at Heron Harbor Marina (115 slips) on Concord Street.

PRIVATE PARKS and MARINAS in Havre de Grace	
Source: City of Havre de Grace - Department of Planning	
NAME	LOCATION
Havre de Grace Little League/Stancill Park	1 OLD BAY LANE
Bayland Condominiums	100 BAYLAND DRIVE
Chesapeake Swim Club	1406 BAYVIEW DRIVE
Canvas Back Cove Condominium	FOUNTAIN & REVOLUTION STREET
Somerset Manor Playground	101 STANSBURY COURT
Seneca Pointe Condominium	OFF SENECA WAY
Grace Harbour	REMINGTON CT & CANVAS BACK DR
Bayview Estates	ROOSEVELT COURT
Havre de Grace Marina	WATER STREET
Tidewater Marina	100 BOURBON STREET
Havre de Grace Marina-Boat Slips	GIRARD STREET / CANVAS BACK COVE
Penns Beach Marina	CONCORD STREET

Other private facilities exist in neighborhoods such as Grace Harbour, Bayview Estates, or Somerset Manor with tot lots and other facilities owned by the homeowners associations and are not available for full public use. There is additionally one private pool, the Chesapeake Swim Club on Bayview Drive that offers membership participation.

### Indoor Recreational Facilities

**Havre de Grace Activity Center** is a shared use activity center which is located on the Board of Education Middle School/High School Complex directly behind Havre de Grace Middle School. Completed in 2007, this project was developed through a partnership between Harford County Government, the City of Havre de Grace, and the Boys & Girls Clubs of Harford County. The facility is used for recreational programs (for all ages) and offices of Harford County Department of Parks and Recreation, youth activities through the Havre de Grace Branch of Boys & Girls Clubs of Harford County, and senior programs through the Harford County Office on Aging.



**STAR Centre**, located on Congress Avenue, is a recently acquired City-owned property that was formerly the gymnasium and auditorium of the Havre de Grace High School. Donated to the City by Harford County Government in 2021, this facility is hosting indoor recreational activities as part of its overarching mission of providing recreational facilities in the gymnasium as well as premier concert space in the auditorium section of the building. The multi-purpose use of the space makes it an in-demand facility, offering a range of activities to include summer camps, indoor recreation, and convention-type uses. This is an excellent example of adaptive reuse of school building and is described more fully in the cultural facilities section of this chapter.

### Harford County Board of Education Playfields

The City's schools, as with most of Harford County school facilities, have been developed in recognition of the "park school" concept. Presently, schools afford most of Havre de Grace's recreational outlets in terms of gymnasium space and playing fields. The outdoor school facilities such as tracks, and playgrounds can be used

by the public when not needed for school activities. A wide variety of recreational programs are offered in the City for children, adults, and senior citizens through the Harford County Department of Parks and Recreation. All recreational activities are supervised by Department of Parks and Recreation staff and its extensive base of volunteers.

**Meadowvale Elementary School** is located on Graceview Drive on the east side of the Meadowvale Neighborhood. The total area including school buildings and parking areas is 13 acres. Facilities include a softball field, two basketball courts, and a playground.

**Havre de Grace Elementary School** is located on South Juniata Street and encompasses a total area of 10 acres including school buildings and parking areas. Facilities include a softball field, two basketball courts, and a two age-appropriate playgrounds.

**Havre de Grace Middle School/High School Complex** is a 57 acre site located between Lewis Lane to Juniata Street adjacent to the AMTRAK rail line. A beautiful, new combined Middle School/High School was opened in 2021 immediately following COVID-19 school shutdowns. The site is well-designed with pathways connecting through the middle of the property. Facilities include 4 baseball/softball diamonds, 4 basketball courts, 8 tennis courts, 3 multi-purpose playing fields, and a football stadium complex.



Aerial photo of school Middle School/High School complex, 2023

#### Regional Parks and Open Space

**Chapel Road Park**, located just outside of Havre de Grace at Earlington and Chapel Roads, is a large neighborhood park was ready for play in 2011. The site is 67 acres and includes multi-use playing fields and paved walking trail for users of all ages. It is an excellent amenity to the greater Havre de Grace region supporting programmed activities through the Havre de Grace Recreation Council.

**Alfred B. Hilton Park** is located on Gravel Hill Road west of the City and is within the Havre de Grace Recreation Council Area. The park is approximately 11.9 acres in size has been named in honor of Harford County's only Medal of Honor recipient, Alfred B. Hilton, who died in battle during the Civil War. The park has playground equipment and 2 playing fields and a monument in honor of Hilton.

**Susquehanna State Park** is a large regional park located just north of the City and is part of the State Park System. This extensive park area incorporates vast natural areas along the western shore of the Susquehanna River and serves the Lower Susquehanna/Upper Chesapeake Bay region. It is the largest State Park in Harford County, consisting of 2,639 acres and has a boat launch ramp, fishing pier, camping and picnicking facilities, the historic Rock Run Mill, and Steppingstone Museum which is an interpretive farm and agriculture/cultural museum. Most of the parkland is forested and ranges from gently rolling hills to steep slopes and deep narrow stream valleys. The Deer Creek State Scenic River meets the Susquehanna River in Susquehanna State Park. Shoreline and small craft fishing are extremely popular here.



**Swan Harbor Farm** is a large regional park facility located just southwest of Havre de Grace on the Oakington Peninsula. The park contains a beautiful mansion house which is available for receptions, a stately brick-paved pathway to the shoreline with a waterfront gazebo, a 300-foot pier, large meadow areas, the main offices for the Maryland

### PUBLIC PARKS outside of Havre de Grace

Source: City of Havre de Grace - Department of Planning (2023)

NAME	LOCATION	ACRES	DESIGNATION
Chapel Road Park	CHAPEL/EARLTON ROADS	67	Neighborhood
Alfred B. Hilton Park	NE SIDE GRAVEL HILL ROAD	11.9	Neighborhood
Susquehanna State Park	LAPIDUM/STAFFORD ROADS	2639	Regional
Swan Harbor Farm	401 OAKINGTON ROAD	532.7	Regional
Tydings/Oakington Park	701 OAKINGTON ROAD	312.2	Regional
Mullins Park	SOUTH SIDE ROUTE 7 (POST ROAD)	251	Regional
Belle Vue Farm	415 OAKINGTON ROAD	347.4	Regional
Garrett Island	SUSQUEHANNA RIVER	198	Regional

Agricultural Education Foundation with exhibit areas for agricultural education, active farm fields, and a field for radio controlled aircraft. Located directly on the Chesapeake Bay, Swan Harbor Farm is owned and operated by the Harford County Department of Parks and Recreation and, combined with adjoining

**Belle Vue Farm, Tydings/ Oakington, and Mullins Park**, publicly-owned lands on Oakington now exceeds 1,400 acres and more than 2 miles of shoreline access along the Chesapeake Bay. Staff with Harford County Department of Parks and Recreation are currently developing a masterplan for the entire **Oakington Peninsula Park System** that includes all of the county-owned properties. The proposed uses are expected to attract users far and wide to experience the scenic picturesque beauty of the Bay while protecting the shoreline and preserving the natural history of the respective sites.

**Garrett Island** is a 198- acre island located close to the mouth of the Susquehanna River in Cecil County. It is part of the National Wildlife Refuge System -- Chesapeake Marshlands National Wildlife Refuge Complex and was purchased by the U.S. Fish and Wildlife service in 2005 through the efforts of Cecil Land Trust. At this time, it is considered protected lands and not opened to the public.



Photo of sunrise over Garrett Island courtesy of Ed Rybczynski

#### Trails that Connect

**The Promenade** is located along the Chesapeake Bay from Tydings Park to the Concord Point Lighthouse. Approximately half a mile in length, the Promenade consists of a handicap-accessible waterfront walkway constructed of wood decking and concrete with brick inlay sidewalk, with entrances at Tydings Park, Havre de Grace Decoy Museum, Lafayette Street, and along Concord Street. Other facilities include observation decks, a gazebo at the entrance of Tydings Park, information kiosks, benches, trash receptacles, a lighting system. The Promenade is a component of an integrated community park— along with Tydings Park and Concord Point Park — for City residents and the greater Harford County region.

**Lafayette Trail** was developed by the Historic Preservation Commission in 1986 to showcase some of the predominant structures in the City’s National Register Historic District. Consisting of a self-guided tour utilizing a brochure or Distrix online app, the trail is approximately 3.5 miles in length and marks 57 important historic buildings.

**North Park Loop Trail**, a.k.a. the Joe K. Trail (so nicknamed for Joe Kochenderfer, trail steward), connects the Lock House Museum and preserved outlet lock with North Park. The City has had a lease to utilize this now

Constellation-owned property since 1972 with the agreement that it can only be used to publicly accessible recreation. Portions of the trail following an old rail bed that served to construct the Conowingo Dam in the 1920's; other portions follow the Susquehanna shoreline. The LSHG and Mason-Dixon Trail are coincidental with this trail to form greater trail systems.

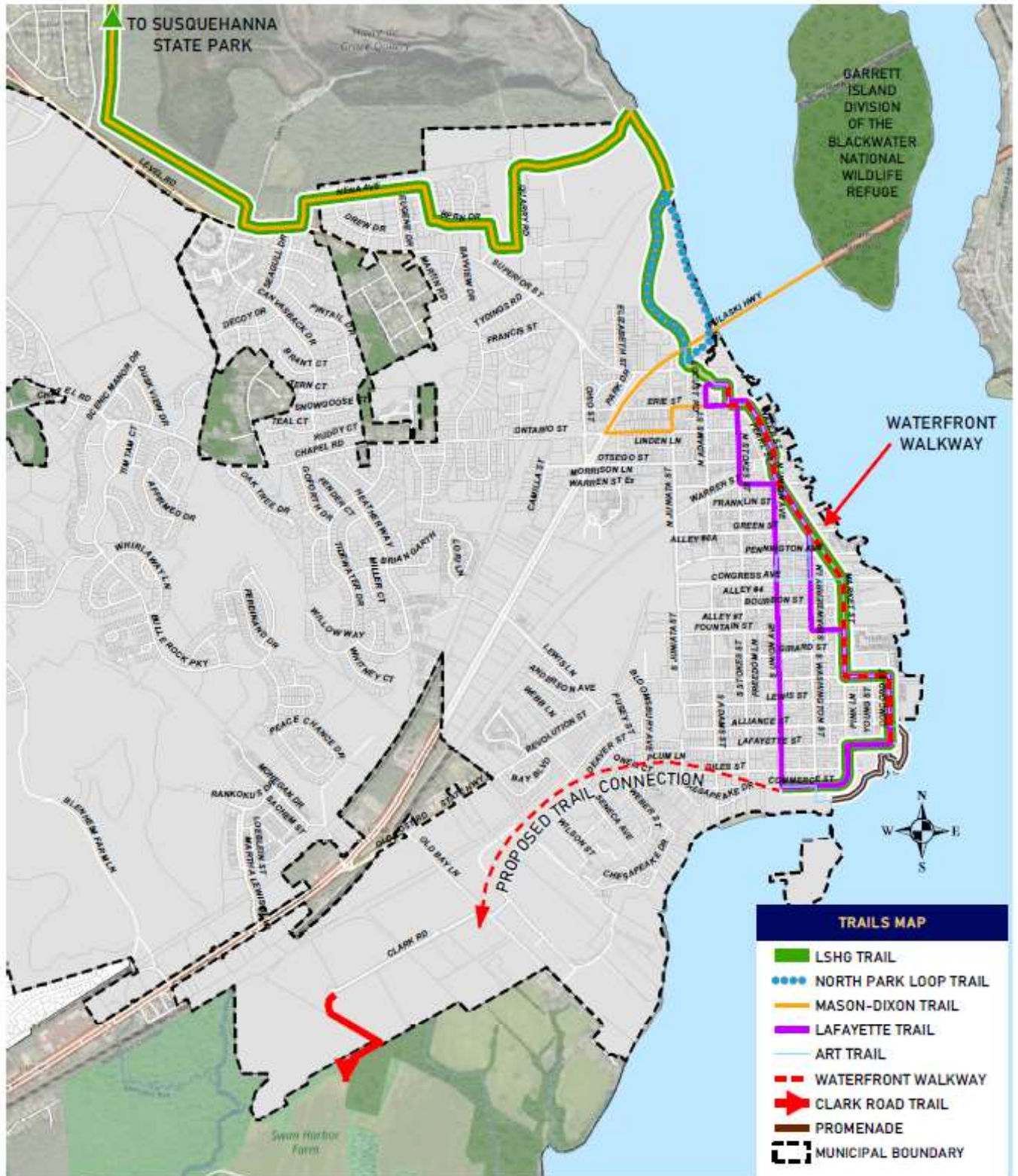
**\*NEW\* Art/Sculpture Trail** is incorporating public art, specifically sculpture, along the waterfront walkway to various public parks, museum grounds, and within the historic district. The Havre de Grace Arts Collective began this initiative in 2022 and it will consist of permanent as well as changing (non-permanent) sculptural pieces. The trail will be approximately 2.7 miles in length.

**Lower Susquehanna Heritage Greenway (LSHG)** is a project that has been under development since the 1992 and consists of a series of trails beginning at the Conowingo Dam and traverses both shores of the Susquehanna River to the Chesapeake Bay. The LSHG connects a number of key cultural, historical, and natural features along the Susquehanna, such as Susquehanna State Park, Havre de Grace, and the Towns of Perryville and Port Deposit in Cecil County. All three municipalities have waterfront pathways, such as the Promenade, to lend to the connectivity of valuable waterfront areas. The trail provides recreational opportunity for residents of all ages, including walkers, joggers, and bicyclists within the region. Its national historic presence and popularity attracts visitors to experience its scenic picturesque beauty, and it is desired that the LSHG eventually have up to two river crossings to bridge the Susquehanna River, ideally with one between Havre de Grace and Perryville and the other between Susquehanna State Park and Port Deposit.

Connections through Havre de Grace to the **Clark Road Trail** link the City to Swan Harbor Farm and ideally all the public lands on the Oakington Peninsula. (Please see chapter, *Relationship to Lower Susquehanna Heritage Greenway*)

TRAILS in Havre de Grace			
<small>Source: City of Havre de Grace - Department of Planning (2023)</small>			
NAME	LOCATION	MILES	DESIGNATION
The Promenade	CONCORD/LAFAYETTE STREET	.5	Local
Lafayette Trail	OFF CONESTEO STREET	3.5	Local
North Park Loop Trail (LSHG)	OFF CONESTEO STREET	1.5	Local
Clark Road Trail (LSHG)	CLARK ROAD	0.3	Local
Heritage Corridor (LSHG)	WATERFRONT/OLD TOWN	1.3	Local
Art Trail	WATERFRONT/OLD TOWN	2.7	Local
LSHG	4948 CONOWINGO ROAD	21.4	Regional
Mason-Dixon Trail	QUARRY ROAD	199	Regional

**Mason-Dixon Trail** is a 199 mile 3-state trail system linking hiking trails and on-road segments between south-central Pennsylvania, northern Delaware, and northeastern Maryland, connecting the Appalachian Trail with the Brandywine Trail. It is a very rugged trail and not for the faint of heart. This trail system is coincidental with the LSHG through this region.



TO SUSQUEHANNA STATE PARK

GARRETT ISLAND DIVISION OF THE BLACKWATER NATIONAL WILDLIFE REFUGE

WATERFRONT WALKWAY

PROPOSED TRAIL CONNECTION





## Museum, Arts, and Cultural Facilities

Havre de Grace has 7 public museums and cultural attractions opened for business and a bevy of additional non-for-profit facilities that are coming online, like the Harmer’s Town Arts Center and the recently opened Arts Collective *Gallery 220*. The City is pushing itself to develop a critical mass of cultural attractions – public and private – to truly be a center for arts, culture, and entertainment within the region. Comprised of museums celebrating history and arts venues celebrating creativity, the cultural scene is taking off through the efforts of many dedicated business owners, volunteers, and staff.

Museums have been stronghold of cultural interpretation in Havre de Grace, with structures like Lock House Museum and Concord Point Lighthouse being protected early by the City through historic easements and made accessible to the public, largely through support efforts of volunteers and ‘Friends’ groups. The Decoy Museum became a mainstay and now the collection of museums include the Havre de Grace Colored School Museum and Cultural Center in 2019. As part of an identified Certified Heritage Area, the City’s cultural resources have a direct line of grant funding support through the Maryland Heritage Areas Authority, for which the City’s museums have benefitted greatly. One additional resource that is a connecting link to the Maritime and Decoy Museums is the nearby Moore Family Homestead. This is a donated site with 2 homes, one pre-Civil War and one built in an Eastern Shore vernacular style, that have historic connections to the gunning and boat building history in Havre de Grace.

MUSEUM and CULTURAL FACILITIES in Havre de Grace	
<i>Source: City of Havre de Grace - Department of Planning</i>	
NAME	LOCATION
Havre de Grace Decoy Museum	100 GILES STREET
Havre de Grace Maritime Museum	100 LAFAYETTE STREET
Havre de Grace Colored School Museum	555 ALLIANCE STREET
Lock House Museum	817 CONESTEO STREET
Concord Point Light House & Keepers House	714 CONCORD STREET
STAR Center	700 CONGRESS AVENUE
Cultural Center at the Opera House	121 NORTH UNION AVE

The arts scene is building momentum in Havre de Grace but it has always been strong, to include the Arts Commission and Havre de Grace Art Show organized by the Soroptimist International, now coming onto its 60<sup>th</sup> year. Having amazing acoustics and very high seating capacity, it is consummately appropriate that the STAR Centre became a City-owned building to be a new home of arts and theatre, as it was built by Harford County Public Schools as a showcasing theater to also be used by the public. This facility working in tandem with the more intimate Opera House as well as the privately-operated State Theatre are providing unbelievable, accessible entertainment that is only possible in a more urban area. The City will continue to strengthen the Arts & Entertainment District and arts opportunities further.

### Museum Description

**The Havre de Grace Decoy Museum** is a 15,000 square foot facility established to document and interpret waterfowl through this genuine American folk art form as it applies to the heritage of Havre de Grace and the Chesapeake Bay. After renovating the former Bayou Hotel’s power plant facility, the museum which overlooks the Susquehanna River and the Chesapeake Bay opened to the public in 1986. Because of its rapid growth, the museum completed a second floor and elevator addition to achieve its present size and is now moving forward with rear additions for increased square footage. The Decoy Museum contains extensive display areas of local decoy carvers, watercraft, the R. Madison Mitchell workshop, an archival resource library, a gift shop, and conference space.

**The Havre de Grace Maritime Museum** was incorporated in 1988 to preserve the maritime heritage and lifestyle of the Upper Chesapeake Bay region and completed construction of a two-story building on pilings on the south side of the 100 block of Lafayette Street in 2001. The ground floor was later enclosed to create well-equipped environmental lab space for discovering the Upper Bay and its resources. This museum is situated between the Decoy Museum, Concord Point Lighthouse, and the Keeper's House making a wonderful complex of related water-focused museums. The museum sponsors lectures on local maritime-related topics and provides educational programs on maritime history and Bay ecology.



**Havre de Grace Colored School Museum and Cultural Center**, a relatively new museum, is located in the former Havre de Grace Colored High School (c. 1930 brick portion) and earlier frame grammar school (c. 1910). Having been converted to medical offices, the building was acquired in 2019 with a mission to remember, promote, and preserve the history and legacy of the Havre de Grace Colored School and the community that it touched. The building is undergoing dramatic interior restoration to bring back the elements of the building as a school so that its history can be experienced more authentically. The Havre de Grace Colored School Foundation hosts annual events of an Arts, Wine, Jazz & Soul Festival and the Langston Hughes Youth Oratorical Contest to support its mission and extend it to the broader community.

**The Lock House Museum** is located in the historic lock house toll collectors building at the southern terminus of the Susquehanna and Tidewater Canal near Erie and Conestee Streets. The museum was incorporated in 1972 as the Susquehanna Museum at the Lock House with a mission to collect and preserve the history of Havre de Grace and its people, with special emphasis on the southern terminus of the canal. The museum restored the 1840-era Lock House located within North Park, later restoring the outlet lock and reconstructing the pivot bridge on the grounds to safeguard and interpret the site within Havre de Grace's history. In 2020, the museum changed its name to the Lock House Museum – as it has always been referred – and focused its mission to showcase the impact of the Susquehanna & Tidewater canal on the region.

**Concord Point Lighthouse and Keeper's House** are among the most interesting and unique historic structures in Havre de Grace. Built at a cost of \$3,500 in 1827 by John Donohoo, this thirty-seven foot stone masonry structure is the oldest, continuously operated lighthouse in the State of Maryland. The non-profit Friends of Concord Point Lighthouse, Inc. have been maintaining the lighthouse and its grounds, located east of the intersection of Concord and Lafayette Streets, on behalf of the City since 1979. The Friends were also instrumental in the restoration of the Lighthouse Keeper's house across the street which was built in 1829. The complex serves as a period museum.



### [Arts/Cultural Facilities](#)

**Havre de Grace Arts Collective** is a non-profit organization which includes the Havre de Grace Arts & Entertainment District, the *Arts by the Bay Gallery* artists' cooperative, the Havre de Grace Public Art Committee, and *Gallery 220* which opened Spring, 2023. This collaboration of effort is driving arts in Havre de Grace in a unique way, bringing curated exhibitions and arts programming that educates, empowers, and entertains the community. As part of their mission, they are developing a sculpture trail within the City.

**Harmer's Town Art Center** will be an indoor creativity incubator and arts center with an adjoining outdoor interactive art park with pathways, performance areas, and outdoor seating. This nascent arts center operates under a non-profit 501(c)(3) for fundraising and grant-funding and will provide studio space, classrooms, and makerspace with specialized equipment for woodworking, ceramics, and other fabrication crafts. The outdoor Graw Alley Park is anticipated to open in 2023.

**The STAR Centre** at 700 Congress Avenue is the primary indoor cultural facility for the City hosting sports, theatre, arts, and recreational events, thus its name. Located in the former Havre de Grace High School and accessed from Congress Avenue, the auditorium has excellent acoustics, viewing, and stage area capacity with seating capacity for 900+ people. Facilities include the theatre space, large and small gymnasium areas, and support rooms which can be combined for convention-type uses. This is a very recently acquired City-owned facility with its first year of operations in 2022 hosting concerts, theatre, dance performances, variety shows, sporting events, lectures, workshops, summer camps, and innovative educational opportunities.

**The Cultural Center at the Opera House** located at 121 North Union Avenue is a c. 1871 theatre and arts venue that provides an intimate setting for seeing smaller musical groups, shows, films, and lectures within the City's Arts & Entertainment District. Elevator access and life safety improvements were made to this historic Opera House which included a two-story atrium addition that connects this building to the adjacent Fire House #2 (also historic). The second floor theater space provides seating for 200 with state-of-the-art lighting and sound systems. For over thirty-five years, this building had been home to and maintained by the Tidewater Players who stayed true to the purpose of bringing excellent community theatre to Havre de Grace. Through major fundraising efforts and a voter referendum for bond funding, the refurbished Opera House reopened late summer 2017.

## Public Schools

---

The Harford County Board of Education administers the educational system in Havre de Grace, thus improvements of these facilities depends on this county-wide board. Havre de Grace currently has 3 public schools serving its needs: 2 elementary schools (pre-kindergarten to 5th grade) and 1 combined middle school (6th through 8th grade) and high school (9th through 12th grade). The elementary schools serving the Havre de Grace region are Havre de Grace and Meadowvale Elementary Schools. Opened in 1950, Havre de Grace Elementary is located at the intersection of Juniata and Revolution Streets on the edge of the historic district. Meadowvale which opened in 1959 is located just off of MD 155 on Grace View Drive. Due to the need for balancing enrollment, Roye-Williams Elementary School located on Oakington Road between Aberdeen and Havre de Grace will also be part of the elementary school system supporting students within Havre de Grace. The small rural Darlington Elementary is a feeder school for Havre de Grace Middle/High School.

Havre de Grace Middle/High School is a recently-constructed facility that replaced two outmoded secondary school buildings. Opened in spring of 2021 following the COVID-19 shutdown, the building is designed to maximize solar efficiency and was LEED certified as Silver by the U.S Green Building Council in September 2021. The facility and the grounds were designed to take into account the walkable nature of this centralized school within the community, with walking paths that bisect the property (and lead straight through the building) and efficiently reconfigured playing fields. This Middle School/High School complex is truly a point of pride for Havre de Grace.

In accordance with the Harford County Adequate Public Facilities (APF) provisions of the Harford County Code (§267-126), the adopted adequacy standard for Harford County Public Schools (HCPS) is for projected enrollment not to exceed 110% of the State Rated Capacity (SRC) within three years for both elementary and



secondary schools. The City has its own APF regulations that mirror Harford County's which was adopted in 2020. Due to the development in Havre de Grace over the past two decades, school enrollment has increased substantially in all schools, but specifically within Havre de Grace Elementary School. Within the next three years, that school is expected to exceed the 110% SRC.

Because of expanded enrollment and with area schools being over capacity, HCPS began a process of balancing enrollment (i. e. redistricting) in 2019 to redistribute students based on geography. Many of the boundary refinements are in the Havre de Grace and Aberdeen areas due to this region's residential growth. Slight changes to secondary school boundaries took effect in 2023-2024 school year where a portion of Bulle Rock on the golf course (an area not yet built) is now redistricted to Aberdeen Middle and High Schools. Changes to elementary school boundaries were anticipated to go into effect for the 2026-2027 school year where enrollment gets rebalanced between Meadowvale, Havre de Grace, and the Roye-Williams Elementary Schools. However this process will be delayed due to county-wide redistricting related to land purchasing issues.

---

**BALANCING ENROLLMENT**  
**HARFORD COUNTY PUBLIC SCHOOLS**  
*Please see this website for the planned implementation:*  
<https://www.hcps.org/community/balancingenrollment/>

---

As the City continues to grow and develop, it will continue to attract families of various age groups throughout the next 20 years. Rebalancing enrollment for both elementary and secondary education was very timely as the City continues to expand westward towards Aberdeen and the Oakington Peninsula. It is imperative that the growing municipalities work with HCPS within the balancing enrollment process. Proper planning and foresight now can ensure that Havre de Grace continues to be an accessible place which provides excellent educational opportunities for residents and dynamic recreation within the City for generations to come.

*Public School Facilities: Pre-Kindergarten through Grade 12*

**Havre de Grace Elementary** has a rated capacity for 542 students and is currently operating at 104%, based enrollment for the 2022-2023 school year. The school is located in the Old Town area and is walkable by many neighborhoods in the vicinity. To a large degree, it serves the historic areas south of US 40, the Bulle Rock community and Greenway Farms neighborhood. Over the next three years, it will be at 110% capacity which has triggered the need for balancing enrollment actions by HCPS between neighboring elementary schools.



**Meadowvale Elementary** is similarly-sized with a 568 student capacity and is operating at 95% capacity with slight increases over the next 3 years to 99% capacity. It is located within the Meadowvale community and also serves Havre de Grace Heights, Grace Harbor, and Bayview Estates as well as the outlying rural areas beyond city-limits. Both Havre de Grace and Meadowvale are operating near the 110% capacity and three-year projected capacity requirements to meet Harford County's Adequate Public Facilities law for limiting residential growth<sup>2</sup>.

---

<sup>2</sup> 2022 Harford County Government Annual Growth Report, Department of Planning and Zoning

**Roye-Williams Elementary** is larger than the in-town elementary schools with a capacity of 703 students and it is currently operating at 63% capacity. Originally built as Havre de Grace Consolidated School in 1953 to provide grades kindergarten through 12<sup>th</sup> for African-American students prior to desegregation. It was converted into an elementary school (similarly to Hickory Elementary near Bel Air) after 1965. The school is sited on a beautiful rural road on the Oakington Peninsula between Aberdeen and Havre de Grace.

**Havre de Grace Middle/High School**

The main secondary school serving Havre de Grace is the new combined Middle/High School which opened in 2021. Both middle school and high school are within one building and have a current capacity of 1,597 students collectively. Projected enrollment in the next three years is expected to increase to only 94% for the 2025-2026 school year, with steady growth in subsequent years.

Table 5.1 indicates the current utilization, capacity, and projected enrollment of each of the schools over the next three school years. This table ends at the school year 2026-2027, which is the anticipated timeframe for elementary school redistricting, as per the HCPS website. Projected enrollment Capacity for these facilities are small compared to Harford County as a whole; Havre de Grace secondary school capacity are half the size of many of the county’s large schools, such as Bel Air, Southampton, C. Milton Wright, or North Harford. This makes for a very personalized setting and great teacher to student ratios.

**TABLE 5.1  
HAVRE DE GRACE AREA SCHOOL CAPACITY, CURRENT AND PROJECTED ENROLLMENT**

<b>SCHOOL CAPACITY and PROJECTED ENROLLMENT</b>									
<i>Source: Harford County Public Schools &amp; Department of Planning and Zoning - Amendment to 2021 Annual Growth Report (December, 2022)</i>									
SCHOOL	State Rated	Actual 2022-2023	% of Capacity	Projected 2023-2024	% of Capacity	Projected 2024-2025	% of Capacity	Projected 2025-2026	% of Capacity
Havre de Grace Elementary	542	566	104%	574	106%	584	108%	598	110%
Meadowvale Elementary	568	541	95%	548	96%	556	98%	564	99%
Havre de Grace Middle/High	1,597	1,444	90%	1,498	94%	1,506	94%	1,506	94%
Roye-Williams Elementary	703	443	63%	450	64%	442	63%	448	64%
Darlington Elementary	157	100	64%	101	64%	101	64%	101	64%

Balancing Enrollment

For the 2026-2027 school year, HCPS anticipates implementing their plan for balancing enrollment for elementary schools. With these adjustments, Havre de Grace Elementary will operate at 90.6% capacity; Meadowvale will be at 99.6% capacity; and Roye-Williams will be at 85.7% capacity according to HCPS based on the proposed new boundaries. It is anticipated that Havre de Grace Middle/High School will continue to operate from 93 to 95% capacity beyond the 2026-2027 school year. Detailed information on the 2026-2027 school year redistricting for elementary schools can be found on the HCPS website, to include maps and estimated number of students who will be affected by potential redistricting changes.

Higher Education

Within a 50-mile radius of Havre de Grace, there are 58 colleges or universities of all varieties, whether 2-year or 4-year institutions to include schools like Johns Hopkins University, University of Delaware, Lincoln University of Pennsylvania, or UMBC just to name a few. Within Harford County, Harford Community College (HCC) is an accredited 2-year college that addresses the diverse educational needs of the City’s residents

locally. HCC was founded in 1957 and occupies a 352-acre site on Thomas Run Road, ten miles west of Havre de Grace. HCC is an open-access institution that offers 140 + affordable degrees, certificates, and career and workforce programs and is centrally located within Harford County to be accessible by Harford Transit Link local bus service.

HCC provides a vibrant campus setting with 24 buildings – many of them state-of-the-art – and 5 miles of trails. Program highlights are accredited nursing, histotechnology, paramedic, and paralegal as well as a Center for Cybersecurity which has been designated as a National Center of Academic Excellence by the National Security Agency and Department of Homeland Security. HCC’s north campus is the center for a 2+2 program in partnership with Towson University for 4 year degree programs in education. The extensive grounds include a mansion built in 1808, the Hayes-Heighe House, which was the two-story stone farmhouse on the original Prospect Hill Farm.

### Public Buildings

---

As an autonomous municipality, Havre de Grace controls many of its own public buildings for government purposes like City Hall, staffs its own Police Department, and operates its own public works facilities like its water and wastewater treatment plants. The City has also taken on its own Visitor Center which is staffed with a manager and supported by volunteers as well as the STAR Center and Opera House which are described in the Museums and Cultural Facilities section of this chapter. Many buildings, however, are owned and operated by at the county-levels, such as the public schools and libraries, or the federal-level like the US Post Office. This section describes these facilities, providing an overview of the wealth of public buildings from which Havre de Grace receives benefit.

Due to good planning and good luck, the City has a great majority of its public buildings centrally located within the City, making them easily accessible to both older and newer communities. The location of many of the facilities outlined in this section and in conjunction with the Havre de Grace Middle/High School complex creates a strong, identifiable ‘civic hub’ of activity which will prove advantageous in terms of convenience, efficiency, and enhancement of the appearance of the community. This works in tandem with the identified ‘civic spine’ which was part of the Havre de Grace Restoration Plan design charrette with Toole Design Group for Pennington Avenue from Juniata Street to N. Washington Street.





The concept of a civic spine is to link public buildings and civic uses in an identifiable way along the Pennington Avenue from the Havre de Grace Middle/High School complex and recreation area to the downtown Main Street district.

#### Public Buildings Description

**Harford County Public Library, Havre de Grace Branch**, located at 120 N. Union Avenue, opened in 2016 and is approximately 21,000 square feet in area. This library has approximately 36,000 volumes available for circulation with 1 million volumes available county-wide. Harford County Public Library buildings are owned by Harford County Government. Library resources are available through all branches of the Harford County Public Library, which includes 11 locations plus headquarters.

The Havre de Grace Branch held more than 340 events with more than 61,680 in attendance in Fiscal year 2022. These classes, workshops, programs and activities ranged from technology classes for adults through curriculum based story times for our youngest customers and their families. The branch also provides workspace for workforce development including job search skill training, basic computer instruction, workplace literacy, and online classes for workforce preparation, resume writing, test taking, SAT Prep, GED Perp, software certificates and more. Also available is online tutoring for students and language learning courses as well as STEM activities for children and teens in Lafayette's Landing. Lastly, the Preschool Learning Center called Schooner Cove provides activities for pre- and early literacy skill development.

**Havre de Grace City Hall**, located at 711 Pennington Avenue, was constructed in 1992 and opened in March of 1993 with a major expansion completed in March 2002. Havre de Grace City Hall is the main government building for the City, and holds activities for the City's elected Mayor and City Council and all administrative functions. Public areas consist of reception, bill payment, and permits areas, Council Chambers, and conference room. Administrative offices for the Mayor and City Council and Departments of Administration, Public Works, Finance, Economic Development, and Planning are located in this building.

PUBLIC BUILDINGS in Havre de Grace	
Source: City of Havre de Grace - Department of Planning	
NAME	LOCATION
Havre de Grace Library	120 NORTH UNION AVENUE
Havre de Grace City Hall	711 PENNINGTON AVENUE
Havre de Grace Visitor Center	450 PENNINGTON AVENUE
Havre de Grace Community Center	100 LAGARET LANE
Havre de Grace Activity Center	351 LEWIS LANE
Havre de Grace Police Department	715 PENNINGTON AVENUE
US Post Office	301 NORTH JUNIATA STREET
Susquehanna Hose Company 1	451 NORTH JUNIATA STREET
Susquehanna Hose Company 2	125 NORTH UNION AVENUE
Susquehanna Hose Company 3	301 MARKET STREET
Susquehanna Hose Company 4	911 REVOLUTION STREET
Susquehanna Hose Company 5	1542 CHAPEL ROAD
Water Treatment Plant	414 SAINT JOHN STREET
Wastewater Treatment Plant	JERRY FOSTER WAY
Department of Public Works	JERRY FOSTER WAY

**Havre de Grace Visitor Center** opened in 2002 in the former Police Department building located at 450 Pennington Avenue. Staffed with a tourism manager and 18 volunteers, this facility provides a location for information for visitors to Havre de Grace through printed material, staff, and volunteer staff assistance. The Havre de Grace Visitor Center is a platform for promoting the City's and the surrounding region's many attributes and provides a box office for the STAR Centre and ticket sales for many of the City's non-profit events. Annual number of visitors is 5,700 from 32 states and 12 countries.

**Havre de Grace Community Center**, located on Lagaret Lane, is an 11,000 square foot building situated on approximately 53 acres of City-owned land in the northeast corner of the City. Originally built by the Havre de Grace Law Enforcement Association, Inc. to serve as a police training center and community facility, this building was turned over to the City in 1995. The building consists of a banquet/conference room that can accommodate up to 600 persons, a small meeting room, restrooms, and commercial kitchen facilities. Located on the property are 3 recently constructed pickle ball courts and the **K9 Cody Dog Park**. To the rear of the property is the adjacent reservoir with Havre de Grace Green Team community gardens and spectacular views of the Susquehanna River. Combined, these properties should be considered for park-like improvements as a trail-head for Lower Susquehanna Heritage Greenway. Neighborhood connections and an internal circulation loop would provide needed parkland that connects with Meadowvale and adjoin, increasing the overall quality of life for residents and be an attraction for visitors.

**Havre de Grace Activity Center**, opened in 2007, is owned and operated by Harford County Department of Parks and Recreation and houses dedicated space for the Havre de Grace Recreation Committee, Harford County's Office on Aging, and The Boys & Girls Clubs of Harford & Cecil Counties. Central within the City, it is conveniently located adjacent to the Havre de Grace Middle/High School and within walking distance of many neighborhoods. Amenities include a full-sized gymnasium, fitness room, computer room, billiards room, meeting room, and multiple spaces for all-age recreational activities.

**United States Post Office, Havre de Grace Branch** is a 16,100 square foot brick structure located on the northeast corner of Green and Juniata Streets. Built in 1996, this structure consists of a postal retail store and large postal handling operation and serves City and rural areas of the 21078 zip code.

**Fire Protection** in the City is provided by the Susquehanna Hose Company (SHCO), an all-volunteer company with over 120 active volunteers and 19 fire line officers spread throughout 5 divisions at 5 station locations. The Harford County Fire & EMS Association determines policy and governs operations of the 12 all-volunteer fire and EMS organizations within Harford County. SCHO is unique in some of its equipment and rescue abilities, to include an all-volunteer dive unit, swift water rescue unit, and a fire boat for water-related emergencies. Equipment includes a heavy rescue truck, 5 engines, tower, quint, mini-pumper, 3 boats, and 4 utility vehicles.

SCHO is classified with a Class 1 ISO rating, an impressively high mark for an all-volunteer fire department<sup>3</sup>, placing the City's fire response in the top 1% of the country. The City has approximately 600 fire hydrants spaced throughout the City compared to 233 in 2010. The existing fire stations are well dispersed throughout the City and are sufficient in terms of building space and ability to effectively and efficiently serve the community.

- **Fire Station #1** consists of two bays and is located on the southeast corner of Warren and Juniata Streets. This building was constructed in 1982 and has the capacity to house two fire department vehicles, office space, and modern communications equipment.
- **Fire Station #2** consists of a single bay and is located at the intersection of Pennington and Union Avenues. The original portion of this building was constructed as a small public schoolhouse in 1822 and expanded to the north with equipment bay and second floor meeting space added in the early twentieth century.
- **Fire Station #3** consists of two bays and is located at the intersection of Fountain and Market Streets. This single-story building, which replaced the original structure in 1989, also contains a training room with seating for fifty, lounge with a kitchenette, and offices.
- **Fire Station #4** consists of three bays and is located at the corner of Revolution Street and Bloomsbury Avenue. Built in 1994, in place of the original one bay structure, this station serves as the headquarters for the Susquehanna Hose Company. In addition to the bays, the building contains offices for both administrative and line officers, a board room, lounge, and a 1,000 square foot meeting room with kitchen facilities.
- **Fire Station #5**, which is the newest station built in 2002, consists of three equipment bays and is located on Chapel Road near Bayview Estates. It is a single-story structure with a crew kitchen and recreation room for its volunteers.



<sup>3</sup> From <https://www.powerdms.com/policy-learning-center/iso-ratings-for-fire-departments>: ISO stands for Insurance Service Office which scores fire departments on how they are doing against its organizations standards to determined property insurance costs. The higher the ISO fire protection class (with Class 1 being the best), the better the department.



**Emergency Medical Services/Ambulance Services** are provided by the Havre de Grace Ambulance Corps with facilities located on MD 155 across from the community of Grace Harbour. The Havre de Grace Ambulance Corps is an organization responsible for 911 emergency medical and trauma responses within the Havre de Grace region. Over 60 volunteers provide emergency medical response, to include a paramedic unit. The Ambulance Corps is separate from the SCHO fire department and is the only EMS station in Harford County. The building consists of a 5 bay equipment area, 2 large meeting rooms, and commercial kitchen. The volunteer emergency response fire and rescue units are well coordinated in Harford County and are dispatched from the Emergency Operation Center located in Hickory near Bel Air. Public trail connections through the property were completed in spring of 2022 behind the pavilion as part of LSHG and Mason-Dixon Trail network.



**Police Protection** is provided through the Havre de Grace Police Department located on the corner of Pennington Avenue and Juniata Street. This 10,000 square foot Police Department building was opened and became operational in January 2001. The building is equipped with: auxiliary generators for emergency power to continue police and government functions; radio capabilities to operate the Police Department and the City's Department of Public Works, and communicate with other law enforcement agencies; a community meeting room which can be converted to an emergency operation center in the event of an extreme emergency or natural disaster; and intra-fiber-optic network with access to high speed internet cable. A police shooting range with observation tower is situated on James Earl Walker Drive near the main entrance to Vulcan Quarry.

The Police Department is comprised of 3 Department Divisions: Administrative, Patrol, and Criminal Investigations. The Department consists of 45 employees, with 36 sworn officers and 9 civilian personnel. Each officer is equipped with body worn cameras prior to the 2025 mandate. By summer 2023 all patrol vehicles will be equipped with mobile data terminals further enhancing their ability to process citations. Havre de Grace was the first agency in Harford County to implement School Resource Officers in all schools within the City's jurisdictional boundaries, including elementary schools. In 2018, a recognition of community safety by the forum Mothering (mothering.com) ranked Havre de Grace as the 4<sup>th</sup> safest city in the nation to raise a free-range child. In addition, the Havre de Grace Police was the only Harford County agency to receive a better than 90% overall satisfaction rating in all categories in a 2021 citizen survey.



### **Department of Public Works**

Public facilities staffed by the Department of Public Works (DPW) are integral to City's operation and include: treatment of surface water from the Susquehanna River as its public drinking water source; collection and treatment of municipal wastewater; fleet maintenance; parks and facilities maintenance; marina management; streets, roads and water/sewer infrastructure repair; and solid waste contracting for household refuse and recyclables. DPW has a total of 53 employees covering all these needs to keep the City operational.

- **Water Treatment Plant** is a 4 million gallon per day (mgd) capacity treatment plant located on St. John Street in the Main Street district. It is a Class 4 treatment plant as categorized by the Maryland Department of the Environment and is staffed by 9 employees, operating 24 hours a day. Currently, the plant treats approximately 1.6 mgd. The plant underwent a major upgrade which was completed in November 2022 and is now SCADA controlled, meaning it is an automatic computer-controlled system. Immediately adjacent is a Harford County sister plant which uses the Susquehanna River as a back-up water source.



- **Wastewater Treatment Plant** is located on City-owned property adjacent to the Chesapeake Bay and the Maryland National Guard Reservation. It is a Class 5 Enhanced Nutrient Removal (ENR) plant and treats approximately 1.7 gallons of effluent per day. As part of the wastewater system, there are 10 sewer pumping stations distributed throughout the City, with 2 main ones located on Erie Street and Lafayette Street. Eight employees operate the wastewater treatment facility, which also runs 24 hours a day. In 2010, the WWTP was recognized by the Maryland Rural Water Association as Wastewater system of the year for its early ENR upgrades. City staff have applied and received Chesapeake Bay Restoration Fund grants every year since 2010.



- **DPW Shop** is located on Jerry Foster Way adjacent to the Maryland National Guard Reservation and the Havre de Grace Wastewater Treatment Plant. The shop building consists of a 4,000 square foot repair garage and storage building with office space and locker room, a 3-pump gas facility, an open storage area for construction materials and salt dome located on the WWTP property, and a parking area for the Department of Public Works vehicle fleet. Staff here maintain the City's fleet of vehicles for Police Department, DPW, and City Hall use.
- **DPW Building and Storage Facility**, opened in 2005, is located on the same campus as the DPW Shop and adjacent to the Wastewater Treatment Plant. This building complex provides offices, support, and storage facilities, 5 material bins, and a vehicle wash area with separator. Twenty-two DPW employees operate from this location as well as Code Enforcement through the Department of Planning.

## Health Services

Havre de Grace is situated between major metropolitan areas that offer excellent health care options and easy accessibility to world-renowned medical specialists. Large hospital systems within close proximity to the City include University of Maryland Medical System, MedStar Health, and Johns Hopkins in the Baltimore region within an easy 30-mile drive to the south and ChristianaCare system to the north in the Wilmington region. Changes in health care delivery has occurred locally, with the closing of UM Harford Memorial Hospital (UM HMH) in Havre de Grace and the opening of UM Upper Chesapeake Medical Center Aberdeen

(UM UCMC Aberdeen) in February 2024. Included in these changes were the expansion of behavioral health at the Aberdeen location and consolidation of acute care services at UM UCMC in Bel Air.

Residents of Harford County are fortunate to have a state-of-the-art acute care hospital and supporting medical facilities at the Bel Air location. The nearby Aberdeen Freestanding Medical Facility (FMF) provides emergency services, imaging, outpatient services, and an entire behavioral health hospital within the newly constructed main building. Additional medical services at the Aberdeen campus include a Health and Wellness Center, hematology/oncology with a fully-equipped infusion center, and imaging services. Supporting and strengthening the community medical system are incredibly important as a mainstay in a community's quality of life but particularly when it comes to emergency care.

The dynamic of this changing health care delivery within Harford County has significant impacts for Havre de Grace, with the City having had the presence of Harford Memorial since 1912. The transition has not been easy and, from a land use perspective, a major factor in the City's built environment in the near future will be the redevelopment of the UM HMH site after the hospital's closing. To that end, the Department of Planning is proceeding with getting outside consultant assistance with developing new zoning requirements for its redevelopment so that it can be a focal point of pride within the City's National Register Historic District.

---

*UM UPPER CHESAPEAKE HEALTH*  
*For all information related to hospital services within Harford County, see this link:*  
*<https://www.umms.org/uch>*

---

Behavioral health and drug treatment are integral to facility evolution within Harford County and recent development of facilities for these needs are addressed in this section. This includes The Klein Family Harford Crisis Center as well as the facilities that will be offered through UM UCMC Aberdeen as primary service providers for these important and often overlooked health needs. In addition, 2 nursing care facilities are briefly described, outlining the complement of health-related services available within Havre de Grace.

#### [Health Care Facility Description](#)

***UM Upper Chesapeake Medical Center Bel Air*** includes the hospital facility itself, the Kaufman Cancer Center, Klein Ambulatory Care Center, and an Advanced Outpatient Surgery Center which will be opening spring 2024. The campus is centrally located in Bel Air on MD 24 and McPhail Road. Recent improvements include emergency department renovations and expansion and the construction of 3 additional floors for a patient bed tower adding 72 patient beds<sup>4</sup> due to the consolidation of acute care services at the Bel Air location.

UM UCMC is described as a 174-bed acute care hospital<sup>5</sup> offering a 24-hour visitation policy, medical and surgical inpatient services, pediatric services, obstetrics through the Family Birthplace, emergency department, intensive and progressive care units, surgical services, dialysis, cardiopulmonary, imaging, and rehabilitation services. The Ambulatory Care Center of Harford County houses the Heart and Vascular Institute and Harford Surgery Pavilion as well as ambulatory care imaging services and diagnostic testing. Multi-specialty surgeries not requiring a hospital stay are performed in the Surgery Pavilion of this building.

***UM Upper Chesapeake Medical Center Aberdeen*** is located on MD 22 and McHenry Road in Aberdeen and is replacing UM HMH. This facility was developed as a freestanding medical facility with a separate behavioral

---

<sup>4</sup> According to information on <https://www.umms.org/uch/patients-visitors/construction-updates>

<sup>5</sup> P. 12 October 28, 2022 Consolidated Financial Statements and Supplementary Information at : <https://hsrc.maryland.gov/Documents/Hospitals/ReportsFinancial/Audited/FY%202020/UMMSS%20FY%202020%20AFS.pdf>



health hospital for addressing mental health and addiction. The campus features a newly constructed medical center with helipad, emergency department with 20 treatment bays (2 of which are resuscitation/trauma bays), behavior health emergency and inpatient hospital. Physician specialties include cardiology, hematology/oncology, orthopedics, physical therapy, primary care, imaging, infusion center, and wound care, according to their website.<sup>6</sup>

**The Klein Family Harford Crisis Center** is a public-private, integrated system of behavioral health care addressing mental health and addiction in Harford County. It offers immediate access to care in a safe and comfortable setting and coordination of services strengthening the path to recovery and wellness. The Center provides 24/7 crisis hotline and mobile crisis response, a walk-in urgent care clinic and scheduled outpatient services (for children and adults), short-stay residential services for adult guests requiring an extended period of concentrated care.<sup>7</sup>

**MedStar Health Medical Center at Bel Air Medical Campus** is located just south of Bel Air on MD 924 and Plumtree Road. It is a medical center that offers urgent care, orthopedics, physical therapy, pediatrics, a comprehensive cancer center, imaging and lab services.<sup>8</sup> It is part of MedStar Health, the largest health system in the region, and is connected to that network of physicians, services, and locations.

**Private Offices, Medical Facilities, and Services** in the City have been generous, especially for a municipality of this size and population. Havre de Grace has approximately forty private practice medical and dental offices as well as mental health counseling and addiction services. Historically, these offices were centered on Harford Memorial Hospital but many have migrated to newer facilities nearer to US 40. While primary care and preventive medicine are often provided by private physicians, there are 3 Urgent Care facilities within City-limits. Numerous specialist practices are available to include orthopedics, ophthalmology, pediatrics, gastroenterology, obstetrics/gynecology, dermatology, podiatry, hearing specialists, physical therapy, chiropractic medicine, and acupuncture.

**Citizens Care Center** is a non-profit, comprehensive nursing care facility located on Market Street near the City's waterfront. As a nursing care facility, Citizens Care Center provides 24-hour long-term care and can accommodate up to 180 residents. In addition, it provides shorter-term services for occupational, physical, and speech rehabilitation. The modern facilities include private and semi-private rooms, planned activities, and a fully-equipped pharmacy.

**Lorien Bulle Rock** is a private nursing care facility for seniors in need of skilled nursing, rehabilitation, and long-term care. It is located at 1501 Blenheim Farm Lane near the entrance to the Bulle Rock Golf Course at US 40.

## Actions:

---

### Actions for Parks, Recreation, and Open Space

- Develop an identifiable trailhead for the North Park Loop Trail and the Lower Susquehanna Heritage Greenway at the Havre de Grace Community Center located on Lagaret Lane.

---

<sup>6</sup> From UMMS website: <https://www.umms.org/uch/patients-visitors/construction-updates>

<sup>7</sup> This description is taken directly from the Crisis Center website at: <https://harfordcrisiscenter.org/>

<sup>8</sup>From MedStar Health website: <https://www.medstarhealth.org/locations/bel-air>

- Celebrate the work done by Vulcan Materials Company in partnership with volunteers in the development of hiking trails around the perimeter of the mining operation which were opened in the spring of 2022. These trails are located in their buffer and are held in stewardship by the LSHG and Maryland Department of Natural Resources. Over the long-term, work with Vulcan to establish a hiking trail along the shoreline after mining activities at the site cease.
- Enhancement of the North Park Trail system should be continued as a component of the LSHG, to include increased signage for public awareness, bench seating along the trail, invasive weed eradication, and ongoing trail pathway improvements and maintenance. Seek a trail connection through Vulcan Quarry along the Susquehanna River when the quarry ceases operations.
- Continue trail development from Clark Road in the Chesapeake Industrial Park to Swan Harbor Farm, specifically with much needed wetland crossings, so that fully trail connectivity can be made to the future Oakington Peninsula Park System along the Chesapeake Bay shoreline.
- Continue to participate in the planning of the Oakington Peninsula Park System through Harford County Parks and Recreation. This significant regional park should showcase colonial history and provide an intimate wildlife refuge that encourages public access through a carefully planned trail system and features a wide range of habitats native to this area.
- Continue heritage-themed park improvements along the City's vast waterfront at both Concord Point Park at the south end with associated museums – Concord Point Lighthouse and Keeper's House, Decoy and Maritime Museums, and Moore Family Homestead -- and the Water Street Park and Lock House Museum located at the north end of the City. The City has amazing cultural resources that prior generations had the forethought to preserve. These work to anchor collective community pride and be a significant draw for heritage tourism.
- Expand David R. Craig Park under the Amtrak rail bridge to focus on the history of the City's many river crossings over time, according to the specific recommendations of the Susquehanna River Rail Bridge Advisory Board. Consider this location of for a potential Susquehanna River bicycle and pedestrian crossing which would expand its ongoing importance in transportation history.
- Encourage and support a private venture water-taxi shuttle service as a feature to provide access to the water as well as connect various regional waterfront assets, such as Swan Harbor Farm, Susquehanna State Park, and the municipalities of the Lower Susquehanna.
- Explore the potential for a long, offshore jetty system to provide a safe harbor environment that would serve to protect the downtown waterfront from river-related problems. A safe harbor system would provide opportunities for wildlife refuge as well as reduce marina siltation and river-borne debris.
- Provide inviting signage that expresses available activities, hours of operation, "You Are Here" location maps, and wayside trail displays within the parks to educate visitors about a park's history and purpose of its creation.
- Recognize the incredible waterfront recreational lands/open space that surrounds the City, with Susquehanna State Park to the north and Harford County's preserved Oakington Peninsula Park System immediately adjacent to the south.

- Work with Harford County Department of Parks and Recreation with regard to their Parks, Recreation, and Open Space Plan to understand the region's open space requirements and program demands.
- Review the number of baseball/softball fields, basketball courts, football fields, soccer fields, and tennis courts to determine if there is an adequate amount of these facilities based on the National Recreation and Park Standards with respect to recent population growth.

#### Actions for Museums, Arts, and Cultural Facilities

- Support the implementation of the various museums' development plans, as the museums are very important attributes within the City in terms of cultural recollection, education, and archival knowledge.
- Support the professional staff members and large base of volunteers for each museum as they carry out the missions of their respective museums and safeguard the City's cultural heritage.
- Support the Havre de Grace Museum Association in its ability to work collectively for integrated cultural programs for tourists, school children, and residents of the City and Harford County.
- Support the creation of a Havre de Grace Museum that speaks to the City's overall history, whether through the Moore Family Homestead, Harmer's Town Art Center, or other appropriate location.
- Continue to support the advertisement of the museums and their programs through staff and volunteers at the Havre de Grace Visitor Center, which is a hub of relevant regional tourism information.
- Support the concept of more special driving tours with on-board guides and for specially trained docents for walking tours and building tours, set up for special hours and publicized.
- Continue to provide funding for the maintenance of the mission of the museums within the City, as they provide stewardship to important City-owned historic structures.
- Support the development of an art/sculptural trail throughout the City which connects historic and cultural resources within the Sustainable Community area.
- Continue the City's focus on arts and cultural through its support of the many private and non-profit arts organizations, whether the Havre de Grace Arts Collective, the former Arts Commission, the private State Theater, or Harmer's Town Art Center. These resources create a vibrant arts scene that continues to gain momentum.
- Continue to develop the STAR Centre combined with the Cultural Center at the Opera House to strengthen the City as a theatre, arts, and entertainment hub.



### Actions for Schools

- Support Harford County Public School staff and the Harford County Board of Education in their service in bringing excellent public education to the County's school children.
- Work closely with Harford County Public Schools in their balancing enrollment efforts to address school capacity issues as related to residential growth, specifically as related to Roye- Williams Elementary School where both Aberdeen and Havre de Grace are presuming capacity for redistricting due to its location and the fact that it is currently under capacity.
- Work with Harford County Public Schools for identifying locations within the Havre de Grace/Aberdeen area for siting a new elementary school to accommodate continued residential growth. In addition, explore expansion of secondary schools as part of the long-term needs of these growing communities within the Development Envelope.
- Work closely with Harford County Public Schools in any facility upgrades that they may perform within the local community.
- Enhance sidewalk connections to and from the Havre de Grace Middle/High School complex, specifically with regard to crosswalks, so that they may be properly marked and ideally signaled for safety.

### Actions for Public Buildings

- Support and strengthen the concept of a civic spine located along Pennington Avenue, connecting the Havre de Grace Middle/High School complex and the Havre de Grace Activity Center owned by Harford County with all civic uses along Pennington -- including the STAR Centre and the Opera House -- with the downtown Main Street District. Develop this planning concept through signage and cohesive pedestrian connections and highlight it as a common core that contributes to the City's sense-of-place and community.
- Continue the ongoing maintenance of facilities and equipment to keep them in good order so that City government can continue to serve its constituents in an efficient and productive manner.

### Actions for Health Facilities

- Continue to support the strong community health services provided by UM Upper Chesapeake Health with facilities located in nearby Aberdeen and a wide range of services and acute care at the Bel Air location.
- Continue to support local medical providers, as they provide much needed services here and are a tremendous asset to the City.