

Envision HdG

City of Havre de Grace Comprehensive Plan



Work Session 1:

Getting started

Public input thru StoryMaps

- ❑ Seven StoryMaps based on themes
- ❑ Each StoryMap has a survey at the end related to the topic
- ❑ Went live on September 1, 2022
- ❑ Open until the end of January, 2023
- ❑ Link: <https://havredegracemd.gov/envision-hdg/>

Envision HdG/StoryMaps/HdG Comprehensive Plan

Havre de Grace / Envision HdG/StoryMaps/HdG Comprehensive Plan

To kick off the City's Comprehensive Plan, the Planning Department is publishing seven StoryMaps on the following themes to get your input on these topics:

- [Envision Havre de Grace \(Visions/Goals/Actions\)](#)
- [Celebrate Our Environment](#)
- [Growth, Development, and Housing](#)
- [Economic Development](#)
- [History and Cultural Tourism](#)
- [Multimodal Transportation](#)
- [Water Resources Element](#)

Please check out the collection of Story Maps by clicking on the StoryMap themes above and provide feedback through a brief survey at the end of each one.

We are using ArcGIS StoryMaps to elicit public participation because they are a highly-visual, engaging way to inform and inspire a conversation around a particular topic, in this case, the update of our Comprehensive Plan. The Comprehensive Plan describes the goals and aspirations that a community holds for itself. As stated on the Maryland Department of Planning website, it is a policy document that promotes growth that fosters vibrant, livable communities, preserves and protects the environment, and makes efficient use of State resources.

For the full StoryMap collection, click [here](#).

City's StoryMap webpage

Collection

Envision HdG

HAVRE DE GRACE COMPREHENSIVE PLAN

Get started



StoryMap Collection

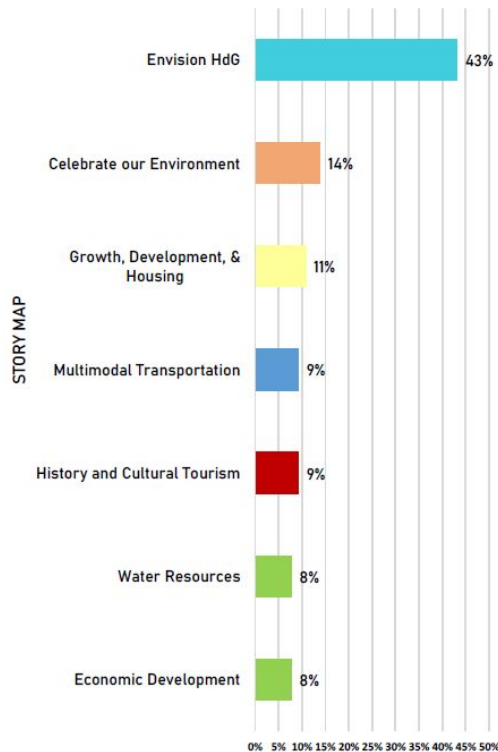
Comments received to-date

September/October



ENVISION HdG Community Engagement Update

STORY MAP SURVEY RESPONSES



SURVEY RESULTS

- 66 Responses

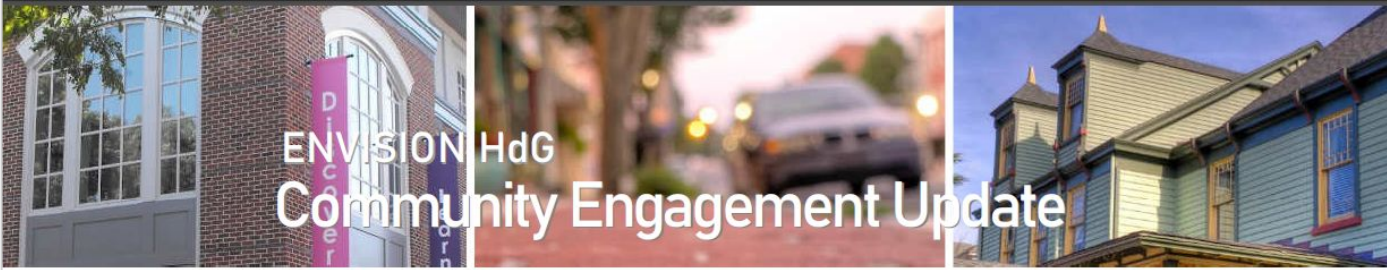
MAJOR TAKEAWAYS AND IMPRESSIONS AS A WHOLE:

What people care about/positives:

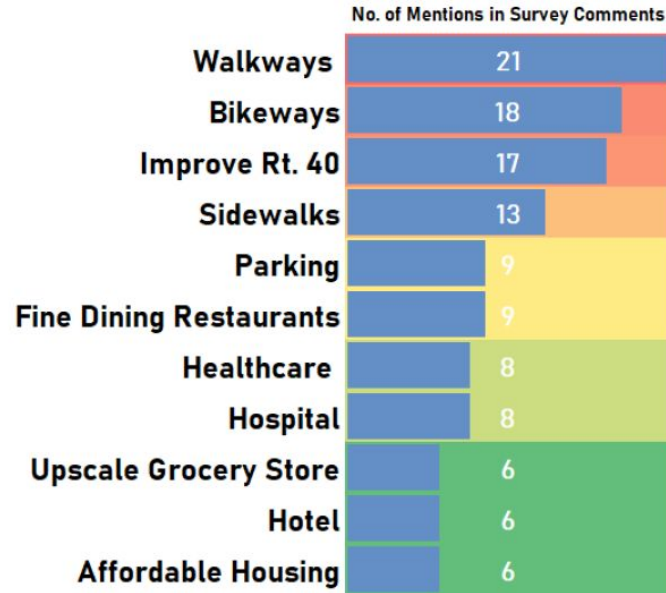
- Safe, connected, livable community
- Healthy, active, sustainable lifestyles
- Tourism, events, small businesses

What are people concerned about:

- Protection of water resources and habitat
- Affordable housing
- Lack of functional non-motorized mobility infrastructure
- Healthcare options
- Connecting diverse communities



What people want to see in Havre de Grace:



i love this town. have lived here for five years and frequent the opera house, star center and state theater. i bicycle a loop of my own making including the north trail up to vulcan a few days a week. i kayak all year round up the river and south to battery island. it would be great to have other bike trails that are safe from traffic to head out of the historic part of the city.

Tree canopy over the entire City for enhancing the context of our historic City. Love North Park and want to keep it a low-key but beautiful attraction.

I'm concerned about what will become if the Hospital building once it closes. Stores, restaurants, more housing.....? For the south end of town. I hope we will have a chance to comment on the plans for that huge space. Beautification of Revolution Street would be wonderful. It is not pretty and the first impression many people see when they drive into town. The Tide is a great addition. Loved by many. We still like to walk everywhere but as we get older it will be helpful to have that available to us.

Improving as a food and arts destination while maintaining authenticity.

Equity, inclusion, & sustainability.

In focus- SIDEWALKS (and safe crossings)

Sidewalks benefit the climate, those without cars, children walking to school (who aren't allowed to cross Revolution Street due to the lack of a crossing guard). Parents drive their children to school because the sidewalks are intermittent. Sidewalks would increase foot traffic and benefit small businesses. Sidewalks would assist anyone pushing a stroller or a walker. Sidewalks would encourage healthy living. A more walkable HdG is a more equitable, inclusive, & sustainable HdG.

Control growth - we are just about big enough Use budget "surpluses" for infrastructure improvements versus the "nice to have" items Beware of "cuteness" versus improvements for regular citizens Promote industrial park areas and RT 40 corridor for business Reduce the many street closures for events but which inconvenience the everyday resident

Individual comments have been substantive



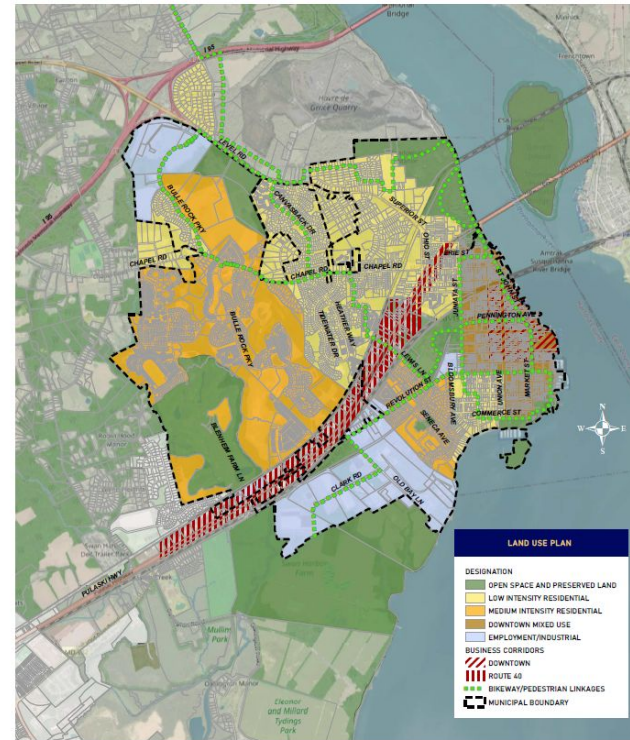
ENVISION HdG Community Engagement Update

Envision HdG

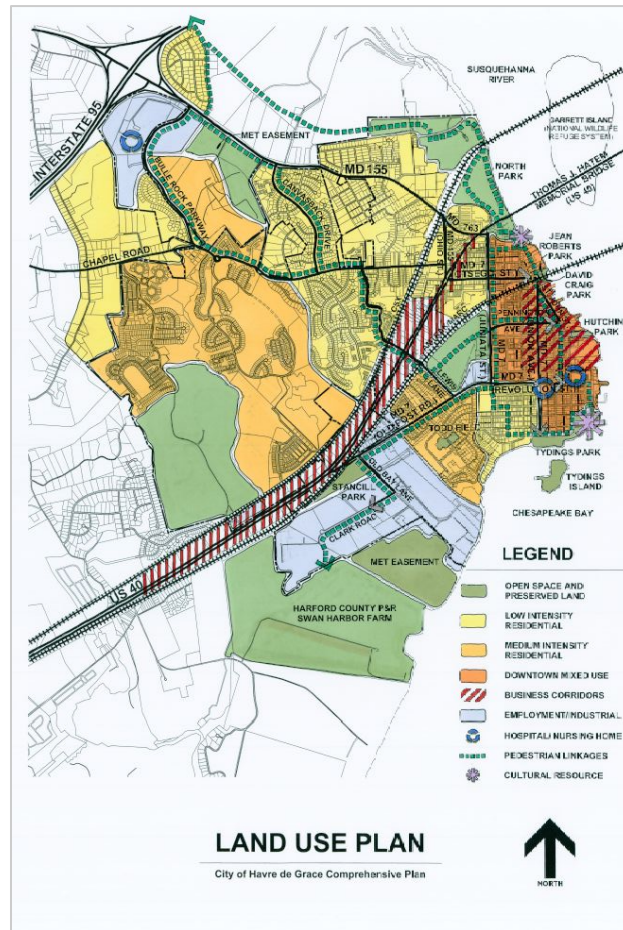
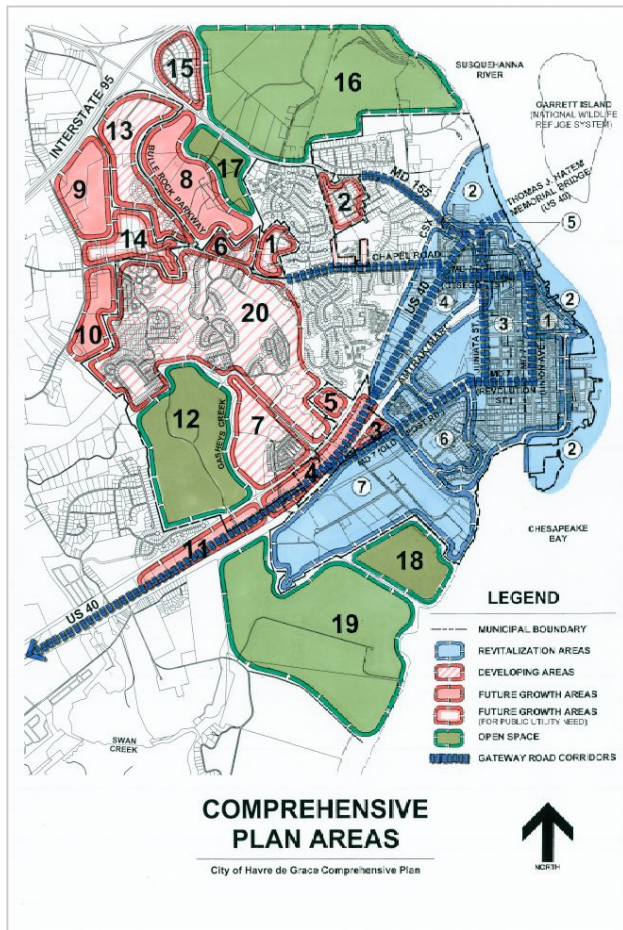


Do you agree with these 7 visions?

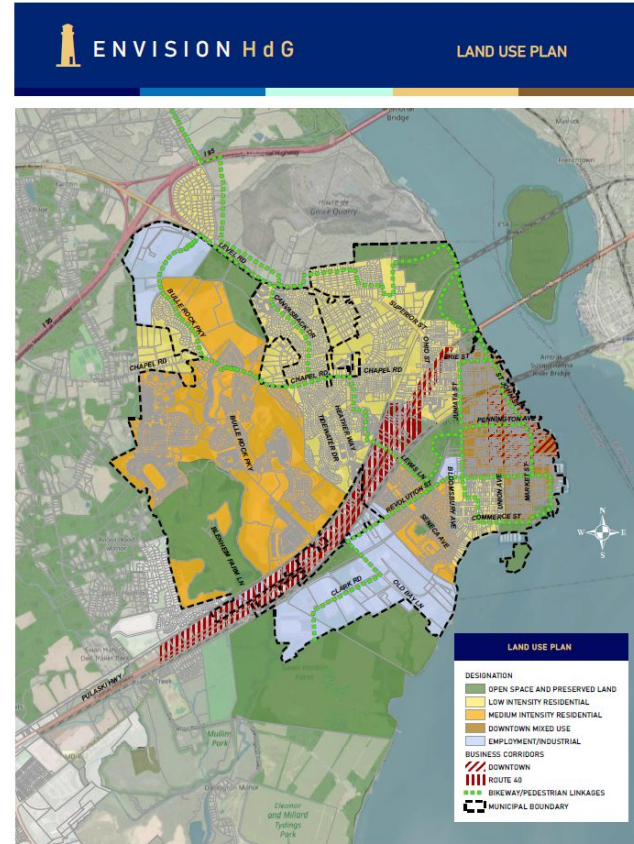
- Healthy community
- Inclusive community
- Vibrant, connected community
- Essential cultural and historic hub
- Cohesive, human-scaled built environment
- Green, more sustainable community
- Fiscally-sound government



We are also working on policy maps



Past map format



Artful but GIS-based, upgraded

Would like your feedback –

Validate the visions

Develop goals that apply to the visions

Sections of the Plan:



- ☐ Visions/Goals/Actions
- ☐ Land Use
- ☐ Sustainability
- ☐ Municipal Growth Element
- ☐ Regulatory Framework
- ☐ Economic Development
- ☐ Water Resources Element
- ☐ Housing Element
- ☐ Historic and Cultural Resources
- ☐ Multimodal Transportation
- ☐ Community Facilities
- ☐ Sensitive Areas, Environmental Resource Protection

Preamble to the Plan:

- ❑ Format concept
- ❑ Highly visual
- ❑ Plan will be in an online flip-book

Section I: Purpose of This Plan: A Preamble

A Guide for Smart Growth	6
Relationship to State Planning Visions	7
City's Relationship to the Region	8
How to Use This Plan.....	9

Section II: Plan for the City

Goals, Objectives, Actions.....	10
Land Use: A Whole-City Plan	11
Community Sustainability: A Strategy for Revitalization	12
Municipal Growth: A Strategy for Growth	13

Section III: Implementation

Regulatory Framework	15
Economic Development.....	16
Water Resources: Supply and Protection	17
Sensitive Areas: Environmental Resource Protection	18
Historic and Cultural Resources.....	19
Transportation: Multi-Modal Options	20
Community Facilities	21
Housing.....	22

Section IV: Supporting Resources

A. Census Data and Population Trends	23
B. Housing Statistics	24
C. Development Capacity and Permit Activity	25
D. Water and Sewer Technical Source Information	26
E. Nutrient Loading: Point and Non-Point Sources	27
F. Capital Priorities for Community Sustainability Plan	28
G. Flood Control	29
H. Technical Maps:	30
Priority Funding Areas	31
Tier I and II Existing and Planned Service Areas.....	32



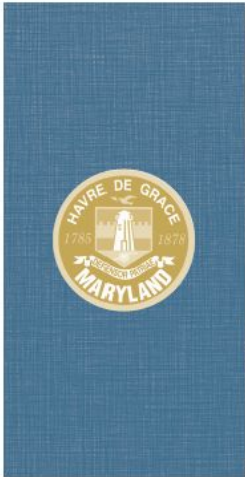
A GUIDE FOR SMART GROWTH

Havre de Grace is an excellent example of smart growth. Initiatives at the State level, the City's proximity to major employers and transportation networks, its waterfront and small-town charm, and fascinating diversity of businesses and citizens all converge to make Havre de Grace interesting and unique within the region. This Comprehensive Plan is developed with these characteristics in mind. Though the plan is a policy guide for land use decisions, it embraces the physical attributes of the City and keeps the human relationship to the built environment at the heart of its purpose.

This Comprehensive Plan is designed to be a guide for the physical development of the City. It was prepared with the intent of educating the public about planning decisions and serves as a document to assist the Mayor, City Council, and staff members as they consider important funding and budgetary priorities. In addition, the Plan serves as recognition of the City's alignment with Maryland's long-standing and admired smart growth initiatives as a cornerstone of intelligent planning and local land use policy.

The purpose of the Comprehensive Plan is to encourage development of a safe, healthy, and distinctive living environment—one that serves the existing community, entices visitors, and stimulates economic development. Also crucial is the desire to retain the small-town aspects of Havre de Grace which so many people cite as being critically important. Historic areas preservation and enhancement remain as a primary planning objective, however, the entire community must be considered in respect to planning and development decisions and programs. Residential neighborhoods, commercial revitalization, and industrial areas must be approached with the same care and thought when policies are planned and implemented.

The City of Havre de Grace Department of Planning, with the guidance of the Havre de Grace Planning Commission, engaged in a review of its 2004 Comprehensive Plan immediately following its adoption of significant amendments in 2010. Those amendments – the Municipal Growth Element and Water Resources chapter – were required by State legislative action in 2006 and provided an increased level of technical analysis for guiding planning decisions. The findings and recommendations included in this planning document serve as the basis for developing subdivision and zoning regulations and, ultimately, a capital improvements program which guides expenditures for necessary public improvements. This Comprehensive Plan is intended to be a reference for community leaders and citizens who are striving to make Havre de Grace a better place in which to live, work, and enjoy an excellent quality of life.



PURPOSE OF THIS PLAN: A PREAMBLE

Welcome

to Envision HdG, the City of Havre de Grace's Comprehensive Plan! Havre de Grace is a vibrant waterfront community with a substantial National Register Historic District, beautiful new communities, connections to State and regional parks, and an excellent business base. This Comprehensive Plan is a document that intends to define a vision for the City's growth and reinvestment over the next ten years. The vision needs to be broad-reaching but achievable, setting the stage for policy decisions and law which governs the way the City will look in the future for years to come. It also needs to be founded in fiscal responsibility, working for the benefit of current and future citizens and business stakeholders. Thank you for taking your time to understand our plan for the City of Havre de Grace. It is our sincere hope that you will share in our vision.

[Welcome to Envision Havre de Grace!](#)

12 Planning Visions

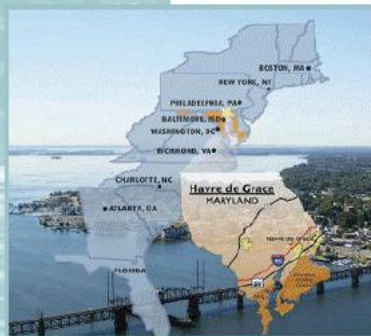
- Quality of life and sustainability:** a high quality of life is achieved through universal stewardship of the land, water, and air resulting in sustainable communities and protection of the environment;
- Public participation:** citizens are active partners in the planning and implementation of community initiatives and are sensitive to their responsibilities in achieving community goals;
- Growth areas:** growth is concentrated in existing population and business centers, growth area adjacent to these centers, or strategically selected new centers;
- Community design:** compact, mixed-use, walkable design consistent with existing community character and located near available or planned transit options is encouraged to ensure efficient use of land and transportation resources and preservation and enhancement of natural systems, open spaces, recreational areas, and historical, cultural, and archeological resources;
- Infrastructure:** growth areas have the water resources and infrastructure to accommodate population and business expansion in an orderly, efficient, and environmentally sustainable manner;
- Transportation:** a well-maintained, multimodal transportation system facilitates the safe, convenient, affordable, and efficient movement of people, goods, and services within and between population centers;
- Housing:** a range of housing densities, types, and sizes provides residential options for citizens of all ages and incomes;
- Economic development:** economic development and natural resource-based businesses that promote employment opportunities for all income levels within the capacity of the State's natural resources, public services, and public facilities are encouraged;
- Environmental protection:** land and water resources, including the Chesapeake and coastal bays, are carefully managed to restore and maintain healthy air and water, natural systems, and living resources;
- Resource conservation:** waterways, forests, agricultural areas, open space, natural systems, and scenic areas are conserved;
- Stewardship:** government, business entities, and residents are responsible for the creation of sustainable communities by collaborating to balance efficient growth with resource protection; and
- Implementation:** strategies, policies, programs, and funding for growth and development, resource conservation, infrastructure, and transportation are integrated across the local, regional, State, and interstate levels to achieve these visions.



City's Relationship to the Region

Havre de Grace is located in northeast Maryland at the mouth of the Susquehanna River on the northernmost reaches of the Chesapeake Bay. The City is centrally located between Wilmington, Delaware, which is forty miles to the northeast, and Baltimore, Maryland, which is thirty-five miles to the southwest. These cities are connected by US 40, which extends through the City, and the John F. Kennedy Memorial Highway (I-95), located just north and west of the City. Major rail lines traverse the immediate area, to include passenger service (Amtrak and MARC) and CSX freight.

Havre de Grace is located in the eastern corner of Harford County and constitutes one of the three municipalities in the County. Other municipalities include the City of Aberdeen, located three miles to the southwest, and Bel Air, the County seat, which is located thirteen miles west of the City. Northeast of Havre de Grace, across the Susquehanna River, is Perryville, which is a small community located in Cecil County. Havre de Grace is connected to Perryville and Cecil County by the Thomas J. Hatem Memorial Bridge and the Millard E. Tydings Memorial Bridge. The Pennsylvania border is twenty miles north of Havre de Grace, and the City is within an hour's drive of Lancaster, Chester, and York. Havre de Grace is forty minutes from Baltimore and Wilmington, seventy-five minutes from Philadelphia and ninety minutes from Washington D.C., making it very central to major international airports. Within a three hour radius of Havre de Grace are the great metropolitan areas of the Northeast Atlantic seaboard, including New York, which constitutes the largest regional concentration of people, urbanization, and economic activity in the United States.



Are we on the right track?

Thank you!

