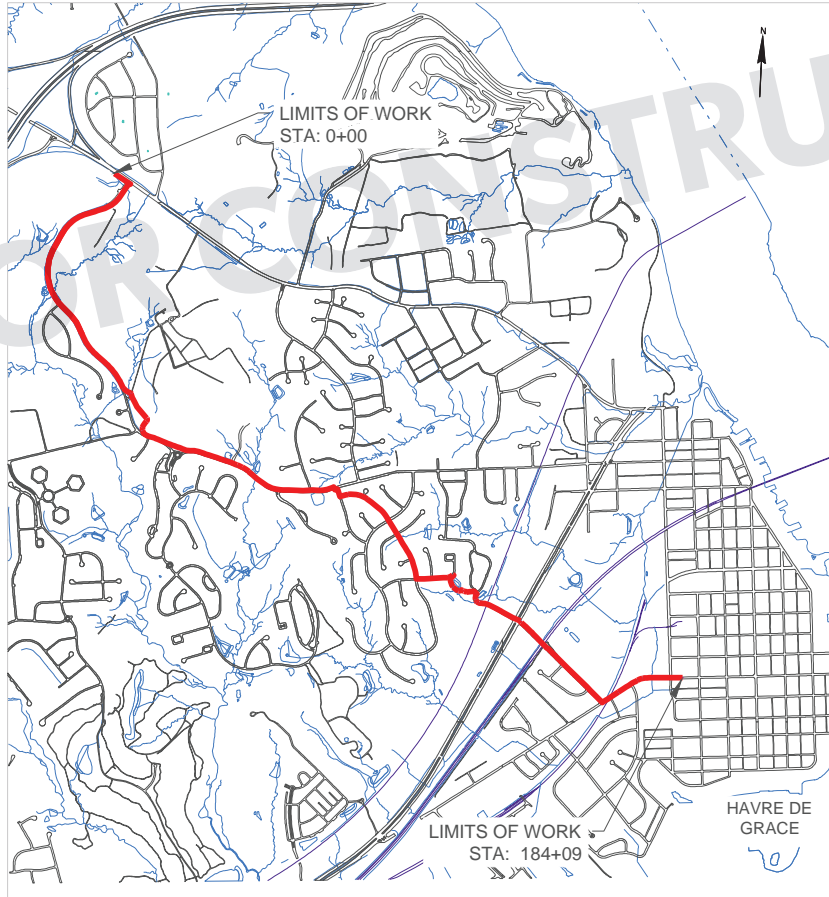


City Of Havre De Grace
HAVRE DE GRACE BIKEWAYS
 HARFORD COUNTY, MD
 1234567-123456.12
 FALL, 2024



Mead & Hunt
 Mead and Hunt, Inc.
 2440 Deming Way
 Middleton, WI 53562
 phone: 608-273-6380
 meadhunt.com

© Copyright 2023 Mead & Hunt, Inc.
 This document is the property of Mead & Hunt, Inc. and may be reproduced, modified or used in any other project or application without the express written agreement with Mead & Hunt, Inc. Mead & Hunt shall not be held responsible for any errors or omissions that may appear in this document.

City Of Havre De Grace
 HAVRE DE GRACE BIKEWAYS

Havre de Grace
 Harford County, MD

ISSUES

NOT FOR CONSTRUCTION

MAP NO: 4566149-240146.01
 DATE: Month 00, 2022
 DESIGNED BY: XXX
 DRAWN BY: XXX
 CHECKED BY: XXX
 DO NOT SCALE DRAWINGS

SHEET CONTENTS
 COVER SHEET

SHEET NO.



Know what's below.
 Call before you dig.

1-001

\\s010011\proj\1234567-123456.12\1234567-123456.12.dwg
 12/31/2022 11:00 AM

INDEX

Sheet Number	Sheet Title
1-001	COVER SHEET
1-002	INDEX AND LEGEND
1-003	PROJECT ALIGNMENT
1-004	PROJECT ALIGNMENT
1-005	PROJECT ALIGNMENT
1-006	PROJECT ALIGNMENT
2-001	TYPICAL SECTIONS
2-002	TYPICAL SECTIONS
2-003	TYPICAL SECTIONS
5-001	PN - 01
5-002	PN - 02
5-003	PN - 03
5-004	PN - 04
5-005	PN - 05
5-006	PN - 06
5-007	PN - 07
5-008	PN - 08
5-009	PN - 09
5-010	PN - 10
5-011	PN - 11
5-012	PN - 12
5-013	PN - 13
5-014	PN - 14
5-015	PN - 15
5-016	PN - 16

LEGEND

EXISTING		PROPOSED
	RIGHT OF WAY	
	PROPERTY LINE	
	PROPOSED EASMENT	
	LIMIT OF DISTURBANCE	---
	MUNICIPAL BOUNDARY	
	CONTOURS	
	CURB & GUTTER	---
	GUARDRAIL	---
	DRAINAGE DITCH	
	STORM WATER MAIN	
	STORM WATER CULVERT	
	WATER MAIN	
	SANITARY SEWER MAIN	
	FENCE (WOODEN)	---
	FENCE (Generic)	---
	STRUCTURE	---
	WATERWAY	
	WATERWAY CL	
	FLOOD PLAIN	
	CONCRETE SIDEWALK	---
	ASPHALT TRAIL	---
	CONCRETE DRIVEWAY	---
	PAVED SHOULDER	---
	WETLAND	
	RIP RAP	
	STAMPED CONCRETE	
	DETECTABLE WARNING SURFACE	
	RETAINING WALL	
	OVERHEAD UTILITY WIRE	
	UTILITY POLE	
	GROUND MOUNTED SIGN	---
	INLETS	
	MAILBOX	
	DECIDUOUS TREE	---
	CONIFEROUS TREE	---
	TREELINE	
	SHRUB	
	PAVEMENT MARKING	---

Mead & Hunt
 Mead and Hunt, Inc.
 2440 Deming Way
 Middleton, WI 53562
 phone: 608-273-6380
 meadhunt.com

© Copyright 2023 Mead & Hunt, Inc.
 This document is the property of Mead & Hunt, Inc. and is intended for use only in the project or projects of the project. It is not to be used for any other project or purpose without the written agreement of Mead & Hunt, Inc. Mead & Hunt, Inc. shall not be held liable for any errors or omissions in this document.

City Of Havre De Grace
HAVRE DE GRACE BIKEWAYS

Havre de Grace
 Harford County, MD

NOT FOR CONSTRUCTION

MSH NO: 4666149-240146.01
 DATE: Month 00, 2022
 DESIGNED BY: XXXX
 DRAWN BY: XXXX
 CHECKED BY: XXXX
 DO NOT SCALE DRAWINGS

SHEET CONTENTS
 INDEX AND LEGEND

SHEET NO.

1-002

\\mead\projects\2023\240146\240146.dwg (1/1) 1/11/2023 10:00:00 AM

Overall Potential Alignment from MD-155 to Juniata ST

LIMITS OF WORK
STA: 0+00

MD-155

REVOLUTION ROAD

LIMITS OF WORK
STA: 184+09

NOT FOR CONSTRUCTION

Mead & Hunt
Mead and Hunt, Inc.
2440 Deming Way
Middleton, WI 53562
phone: 608-273-6380
meadhunt.com

© Copyright 2024 Mead & Hunt, Inc.
This document or any portion thereof, and
its contents, shall not be reproduced, stored,
transmitted, or used in any way
without the prior written consent of Mead &
Hunt, Inc. Mead & Hunt shall not be
responsible for any errors or omissions in
this document.

City Of Havre De Grace
HAVRE DE GRACE BIKEWAYS

Havre de Grace
Harford County, MD

NOT FOR CONSTRUCTION

MSB NO: 4566149-240146.01
DATE: Month 00, 2022
DESIGNED BY: XXX
DRAWN BY: XXX
CHECKED BY: XXX
DO NOT SCALE DRAWINGS

SHEET CONTENTS
PROJECT ALIGNMENT

0 500 1000 Feet
SHEET NO. 1 OF X

1-003

© 2024 Microsoft Corporation © 2024 Maxar © CNES (2024) Distribution Airbus DS

10/20/2024 11:04 AM

SEGMENT 1 - BULLEROCK PARKWAY FROM MD-155 TO CHAPEL ROAD



Mead & Hunt
 Mead and Hunt, Inc.
 2440 Deming Way
 Middleton, WI 53562
 phone: 608-273-6380
 meadhunt.com

© Copyright 2024 Mead & Hunt, Inc.
 This document is the property of Mead & Hunt, Inc. and is to be used only for the project and site identified in the title block. No part of this document may be reproduced or transmitted in any form or by any means electronic or mechanical, including photocopying, recording, or by any information storage and retrieval system, without the prior written permission of Mead & Hunt, Inc. Mead & Hunt, Inc. shall not be held liable for any errors or omissions in these documents.

City Of Havre De Grace
HAVRE DE GRACE BIKEWAYS

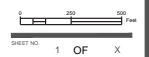
Havre de Grace
 Harford County, MD

SCALE

NOT FOR CONSTRUCTION

MSH NO: 4566149-240146.01
 DATE: Month 00, 2022
 DESIGNED BY: XXXX
 DRAWN BY: XXXX
 CHECKED BY: XXXX
 DO NOT SCALE DRAWINGS

SHEET CONTENTS
PROJECT ALIGNMENT



1-004

© 2024 Microsoft Corporation © 2024 Maxar © CNES (2024) Distribution Airbus DS

PHOTO COURTESY OF HARFORD COUNTY AND AERIAL PHOTOGRAPHY BY MEAD & HUNT, INC. 10/20/2021 11:58 AM EDT

SEGMENT 3 - LEWIS LANE FROM BRIAN GARTH TO JUNIATA ST



Mead & Hunt
 Mead and Hunt, Inc.
 2440 Deming Way
 Middleton, WI 53562
 phone: 608-273-6380
 meadhunt.com

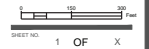
© Copyright 2024 Mead & Hunt, Inc.
 This document or any portion thereof, and
 its contents, shall not be reproduced, copied,
 or used in any other project or endeavor without
 the prior written agreement of Mead &
 Hunt, Inc. Mead & Hunt shall not be held
 responsible for any errors or omissions, or
 liability in these documents.

City Of Havre De Grace
HAVRE DE GRACE BIKEWAYS
 Havre de Grace
 Harford County, MD

NOT FOR CONSTRUCTION

MSH NO: 4566149-240146.01
 DATE: Month 00, 2022
 DESIGNED BY: AP
 DRAWN BY: AP
 CHECKED BY: XXX
DO NOT SCALE DRAWINGS

SHEET CONTENTS
 PROJECT ALIGNMENT

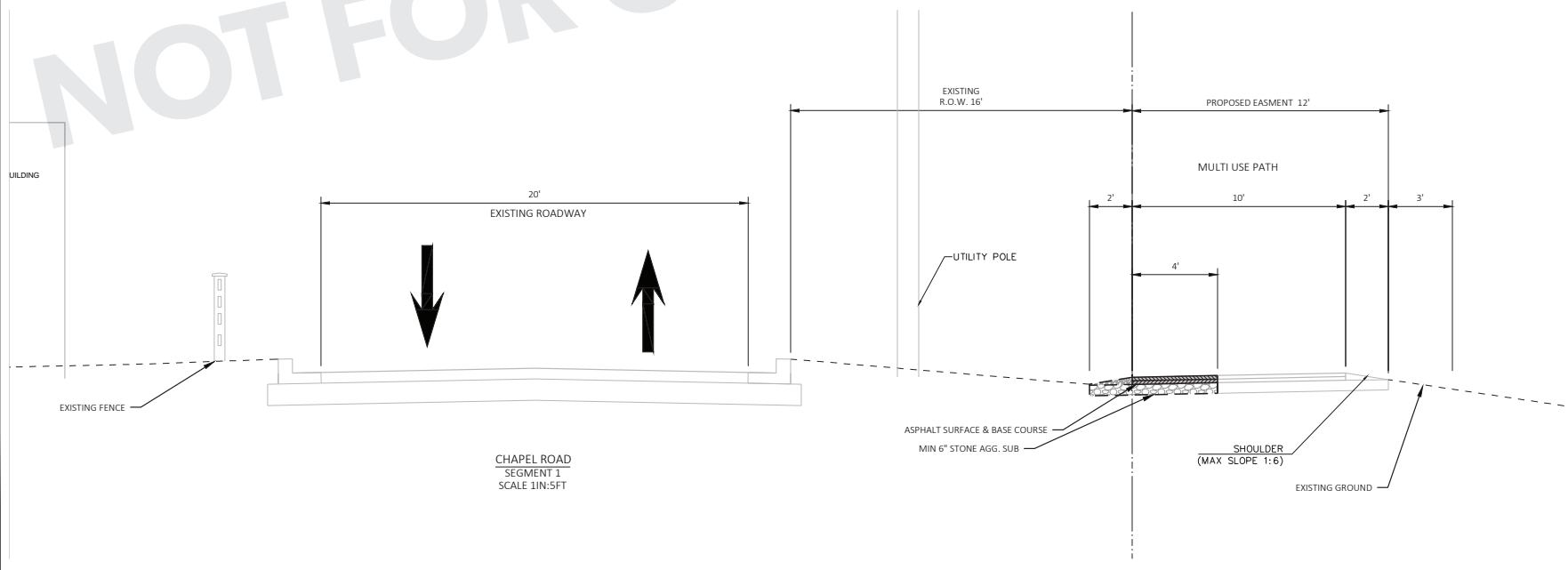
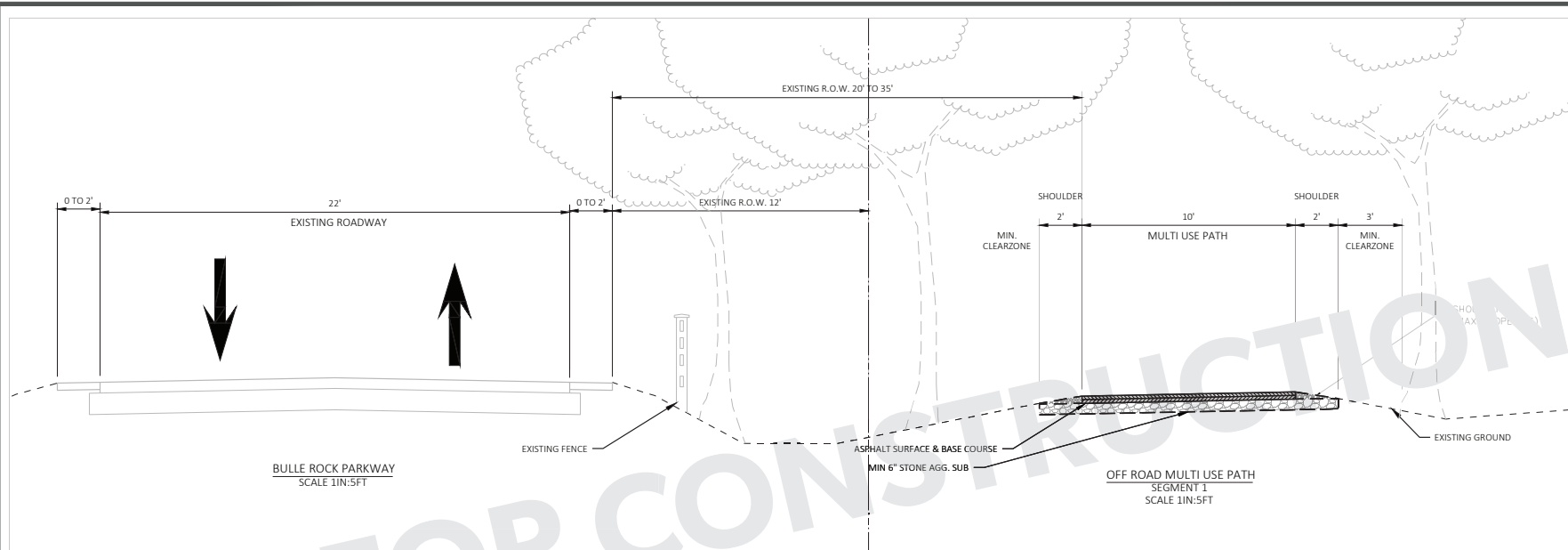


SHEET NO. 1 OF X
1-006

© 2024 Microsoft Corporation © 2024 Maxar © CNES (2024) Distribution Airbus DS

RENDERING COURTESY OF HARFORD COUNTY, MD. ALL RIGHTS RESERVED. 11/20/2024 11:02 AM

© Copyright 2022 Mead & Hunt, Inc.
This document is a preliminary design and not to be construed as a final design. It is subject to change without notice. Mead & Hunt, Inc. and its employees shall not be held liable for any errors or omissions in this document. All rights reserved. Mead & Hunt, Inc. and its employees shall not be held liable for any errors or omissions in this document. All rights reserved.



City Of Havre De Grace
HAVRE DE GRACE BIKEWAYS

Havre de Grace
Harford County, MD

ISSUED

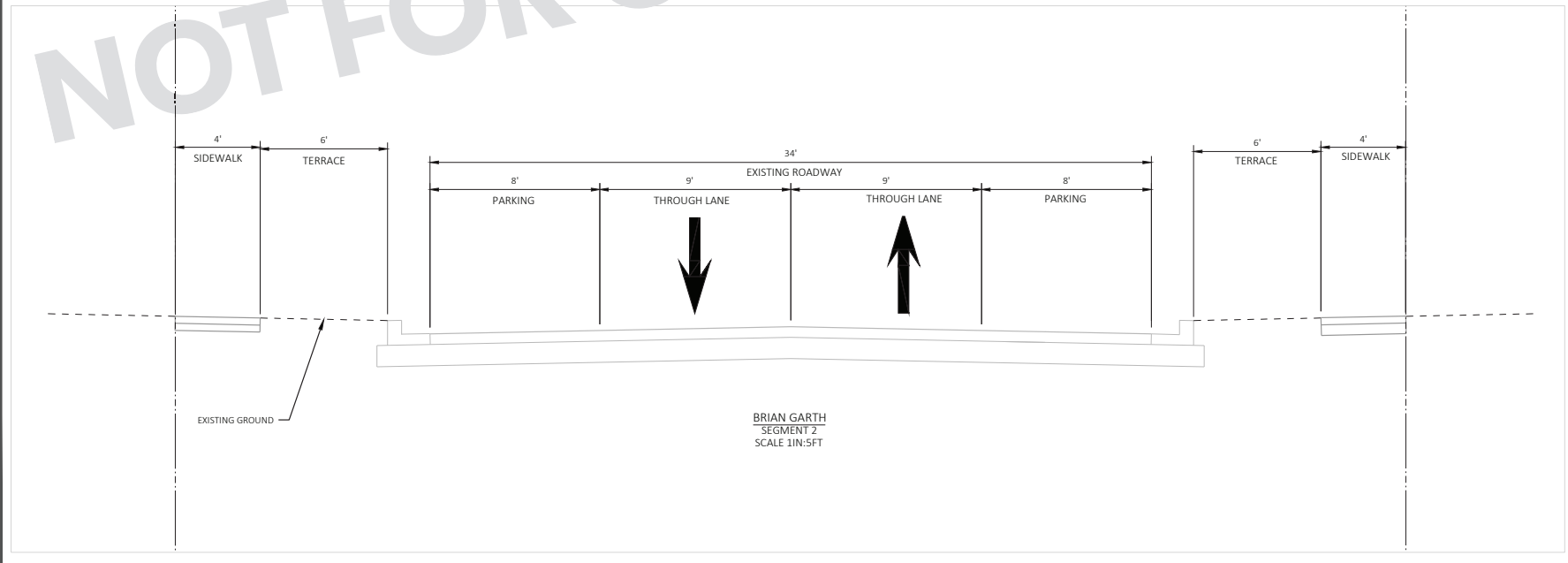
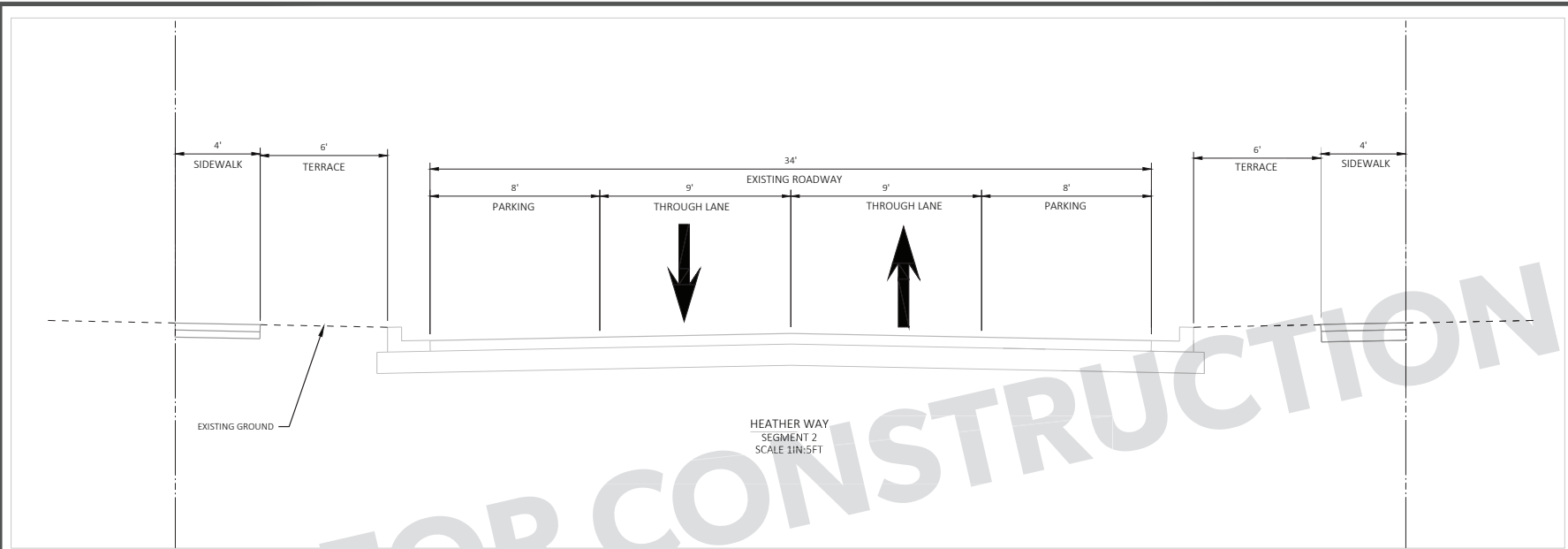
NOT FOR CONSTRUCTION

W/M NO. 4666149-240146.01
DATE Month 00, 2022
DESIGNED BY: XXXX
DRAWN BY: XXXX
CHECKED BY: XXXX
DO NOT SCALE DRAWINGS

SHEET CONTENTS
TYPICAL SECTIONS

SHEET NO. OF
2-001

© Copyright 2022 Mead & Hunt, Inc.
This document is a preliminary design and not for construction. It should not be used for any other project or purpose without the express written agreement with Mead & Hunt, Inc. Mead & Hunt, Inc. shall not be held liable for any damages or losses resulting from the use of this document.



NOT FOR CONSTRUCTION

City Of Havre De Grace
HAVRE DE GRACE BIKEWAYS

Havre de Grace
Harford County, MD

ISSUED

NOT FOR CONSTRUCTION

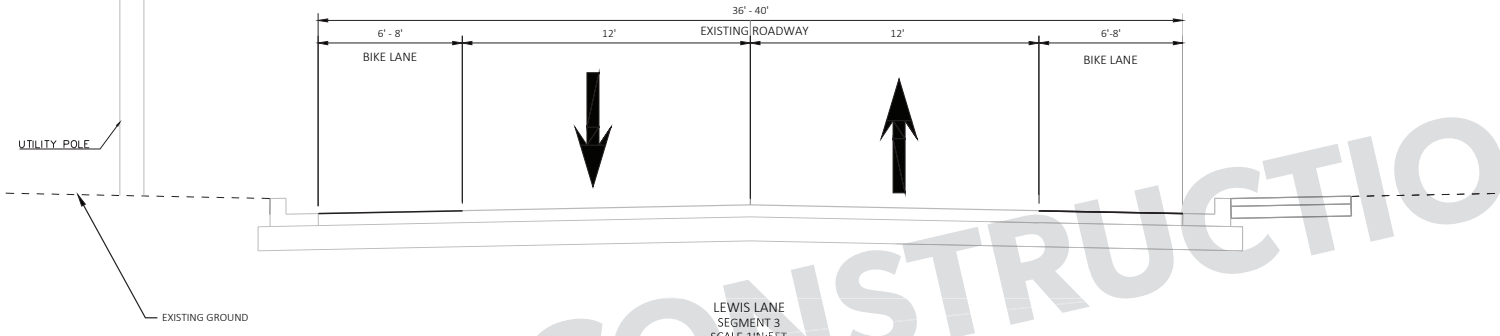
MSJ NO: 4666149-240146.01
DATE: Month 00, 2022
DESIGNED BY: XXXX
DRAWN BY: XXXX
CHECKED BY: XXXX
DO NOT SCALE DRAWINGS

SHEET CONTENTS
TYPICAL SECTIONS

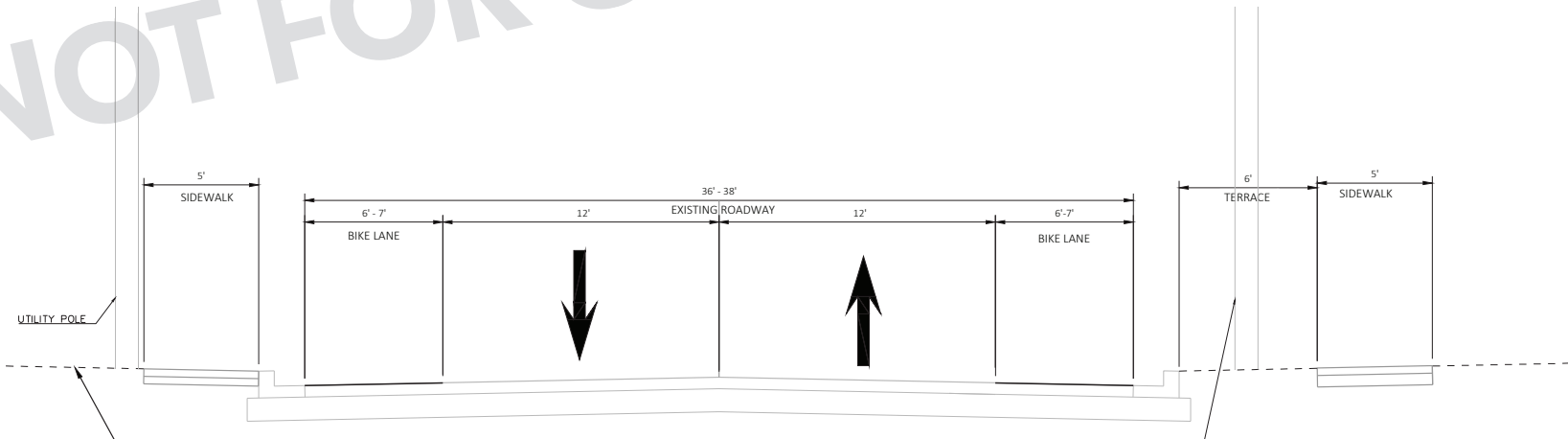
SHEET NO. OF
2-002

X:\WORK\2022\240146\240146-01\TYPICAL SECTIONS.DWG 11/02/2022 11:00:44 AM

© Copyright 2022 Mead & Hunt, Inc.
This document is a preliminary design and not for construction. It should not be used for any other project or purpose without the written agreement of Mead & Hunt, Inc. Mead & Hunt, Inc. shall not be held liable for any errors or omissions in this document.



LEWIS LANE
SEGMENT 3
SCALE 1IN:5FT



REVOLUTION STREET
SEGMENT 3
SCALE 1IN:5FT

NOT FOR CONSTRUCTION

City Of Havre De Grace
HAVRE DE GRACE BIKEWAYS

Havre de Grace
Harford County, MD

ISSUED

NOT FOR CONSTRUCTION

MAN NO: 4666149-240146.01
DATE: Month 00, 2022
DESIGNED BY: XXXX
DRAWN BY: XXXX
CHECKED BY: XXXX
DO NOT SCALE DRAWINGS

SHEET CONTENTS
TYPICAL SECTIONS

SHEET NO. OF
2-003

K:\PROJECTS\2022\HAYRE DE GRACE BIKEWAYS\20220411\11001114.dwg
11/02/2024 11:00:11 AM